

2021 The Quaife MINI CHALLENGE Sporting & Technical Regulations



MINI
CHALLENGE

Published Copy

Signed:

Date:



2021 The Quaife MINI CHALLENGE Sporting & Technical Regulations

SR.1 General Regulations

- SR.1.1 Title and Jurisdictions
- SR.1.2 Officials
- SR.1.3 Competitor Eligibility
- SR.1.4 Registration
- SR.1.5 Championship Events
- SR.1.6 Points Scoring
- SR.1.7 Awards

SR.2 Judicial Procedures

- SR.2.1 Sporting Disputes
- SR.2.2 Technical Disputes
- SR.2.3 Onboard Cameras
- SR.2.3 Technical and Sporting Queries

SR.3 Events and Procedures

- SR.3.1 Entries
- SR.3.2 Briefings
- SR.3.3 Pre-Race Meeting Test Day
- SR.3.4 Qualification Practice
- SR.3.5 Grid Positions
- SR.3.6 Event Procedures
- SR.3.7 Starts
- SR.3.8 Race Stops
- SR.3.9 Re-Scrutineering
- SR.3.10 Pits & Pit Lane Safety
- SR.3.11 Race Finishes
- SR.3.12 Results
- SR.3.13 Lap Timing
- SR.3.14 Operation of Safety Car
- SR.3.15 Official Test Days

SR.4 Penalties

- SR.4.1 Infringements

SR.5 Technical Regulations

- SR.5.1 Introduction
- SR.5.2 General Description
- SR.5.3 Safety Requirements
- SR.5.4 General Technical Requirements and Exceptions
- SR.5.5 Chassis/Shell
- SR.5.6 Body Panels
- SR.5.7 Interior
- SR.5.8 Ride Heights
- SR.5.9 Engine
- SR.5.10 Suspension
- SR.5.11 Transmission
- SR.5.12 Electrics
- SR.5.13 Brakes
- SR.5.14 Wheels
- SR.5.15 Tyres
- SR.5.16 Weights
- SR.5.17 Fuel Tank/Fuel
- SR.5.18 Silencing
- SR.5.19 Numbers and Championship Identification
- SR.5.20 Data Logging
- SR.5.21 Transponders

2021 The Quaife MINI CHALLENGE Sporting & Technical Regulations

SR.6 Commercial

- SR.6.1 Commercial Undertakings
- SR.6.2 Commercial Regulations
- SR.6.3 Penalties
- SR.6.4 Testing
- SR.6.5 Television
- SR.6.6 Advertising
- SR.6.7 Publicity
- SR.6.8 Merchandising
- SR.6.9 Meeting Arrangements
- SR.6.10 Passes
- SR.6.11 Paddock Regulations
- SR.6.12 Timetable Regulations
- SR.6.13 Radios
- SR.6.14 Miscellaneous
- SR.6.15 Championship Livery
- SR.6.16 Team Filming / Footage
- SR.6.17 Press Releases
- SR.6.18 Availability of Cars

SR.7 Officials

- SR.7.1 Championship Officials

Appendix A – JCW Technical Request Form

Appendix B – JCW Log Book

Appendix C – JCW Power Test Authorisation

2021 The Quaife MINI CHALLENGE Sporting & Technical Regulations

MINI CHALLENGE Sporting Regulations

1.1 Title and Jurisdiction

- 1.1.1 The 2021 Quaife MINI CHALLENGE is organised & administered by the British Automobile Racing Club (“BARC”) and promoted by Total Track Ltd and in accordance with the General Regulations of the Royal Automobile Club Motor Sports Association (“Motorsport UK”) (incorporating the provisions of the International Sporting Code of the FIA) and these Regulations.

Motorsport UK Championship Permit No: XXXXXX
Race Status: Interclub
Motorsport UK Championship Grade: C

- 1.1.2 The MINI CHALLENGE is a motor sport Championship comprising of races only for specially built and designated ‘JCW Class’ cars and approved invited cars. All cars competing in the MINI CHALLENGE will be subject to inspection and sealing by championship officials at the discretion of the Championship organisers. Where seals are fitted inspections may take place at any time from when the seal is fitted until the end of the season. The time for inspections will not be limited to 30 days.

The winner of the JCW Class will also be crowned the MINI CHALLENGE Champion.

The Organisers reserve the right to equalise performance of any invitation car, for example by the addition of ballast or modifying electronic control parameters. These cars may not score Championship points and must comply with the registration requirements set out in 1.4 of these regulations.

- 1.1.3 The Organisers reserve the right to issue additional Official Bulletins clarifying items in the Regulations from time to time and all such Bulletins will be issued in accordance with Motorsport UK Regulation D11.1.3.
- 1.1.4 The Organisers reserve the right to carry out necessary or required changes to these regulations which are due to “force majeure”, or for safety reasons, or reliability reasons or if requested by the authorities, by means of Official Bulletins (D11.1.3).
- 1.1.5 The Championship Officials, as listed in these Regulations, are happy to advise Competitors on rules and regulations. Only the event Eligibility Scrutineer, or his deputies are empowered to give any kind of judgment regarding the eligibility of vehicles.

1.2. OFFICIALS

- 1.2.1 Championship Director: Antony Williams or an appointed deputy.
Championship Coordinator: Rhea Beauchamp or an appointed deputy
Championship Parts Manager: Chloe Meadows or an appointed deputy
Technical Officer/Data Officer: Mark Cornell or an appointed deputy

- 1.2.2 Licenced Eligibility Scrutineer: Steven Fitzgerald

The Technical Regulations will be enforced by the Eligibility Scrutineer or the event Chief Scrutineer.

- 1.2.3 Championship Stewards: Pat Blakeney, Dennis Carter, Dale Wells, Guy Woodward

Any three of the Stewards may make a decision. Replacement Stewards may be co-opted to cover “force majeure” situations.

2021 The Quaife MINI CHALLENGE Sporting & Technical Regulations

1.2.4 Clerk of the Course: **Andy Butler** or an appointed deputy

1.3 COMPETITOR ELIGIBILITY

1.3.1 Entrants who are not themselves drivers must be :

- (a) be registered for the Championship and
- (b) be in possession of a valid Motorsport UK Entrants Licence.

1.3.2 Drivers must:

- (a) Be current Racing Members of The British Automobile Racing Club and
- (b) be Registered for the Championship and
- (c) be in possession of valid Competition (Racing) Interclub status Licence, as a minimum or
- (d) A professional driver, in possession of a valid Licence (featuring an E.U. flag) and medical, issued by the ASN of a member country of the European Union, or other comparable country. ((H)26.2.1. applies)
- (e) If participation in the Championship requires absence from education a driver, in full time school education is required to have the approval of their head teacher and a letter stating such approval from their school in order to fulfil registration for the Championship. A driver shall not take time out of their education to participate in motor sport without the prior written approval of their education establishment.

1.3.3 Acceptance of registration is entirely at the discretion of the Championship Organisers and may be withdrawn at anytime

1.3.4 All necessary documentation must be presented for checking at all rounds when signing-on.

1.4. REGISTRATION.

1.4.1 All Drivers and Entrants must complete the official MINI CHALLENGE Registration Form and return it to the Championship Office in order to enter the Championship. It should be clearly understood that by signature of the form all Competitors acknowledge their agreement to be bound by the rules and regulations contained in the Championship Regulations, Championship Terms and Conditions and those stipulated by the Organising Club, the Championship Office, the Event Organisers and the Motorsport UK.

1.4.2 Where a car is entered for the MINI CHALLENGE by someone other than the Driver, it will be necessary for that Entrant (who must be in possession of a valid Motorsport UK Entrant's Licence) to complete the Registration Form and nominate the Driver. The nominated driver must also complete the driver section of the registration form.

1.4.3 Only one Driver may be nominated on each Registration Form.

To cater for "force majeure" situations, additional drivers for a registered car may, subject to approval by the Championship Organisers, be registered for a fee of £500+VAT over and above the standard entry/registration fee.

1.4.4 The maximum number of championship entries will be 34

Only drivers entered for at least 50% of race meetings at the start of the season will be eligible for championship points in respect of the championship.

Reserve entrants may be accepted when the total number of entries exceeds 34.

Reserve positions will be offered entry should a registered entrant withdraw or where the circuit limit is greater than 34 cars. Reserve positions will be offered entry in order based

2021 The Quaife MINI CHALLENGE Sporting & Technical Regulations

on the date when the championship received their entry/registration form. Entries from reserves will only be accepted once a deposit is paid.

Guest & Invitation entries may be accepted subject to the circuit limit. Where a guest driver finishes on the podium they will be allowed to collect to any prize or trophy, but will not score championship points. Where a guest driver finishes in a championship point scoring position all drivers finishing behind the guest driver will be moved up one position for the purposes of championship points only.

Invitation car entries may be accepted to race in the MINI CHALLENGE. Where an invitation car is entered, the Championship may add ballast or any other measure with the aim of ensuring that an invitation car is no faster than the other cars racing. Invitation car entries will not score points or be eligible for trophies.

Acceptance of reserve, guest and invitation entries is at the Organisers discretion.

The Organisers reserve the right to split or add classes or combine with other Championships or series or combine or split grids.

- 1.4.5 Race numbers will be allocated on a strict 'first come first served' basis with the exception of Number 1 which will be reserved for the previous seasons Champion.
- 1.4.6 No Club organising an event for the MINI CHALLENGE, will accept event entries unless the Competitor has previously registered with the MINI CHALLENGE.
- 1.4.7 Acceptance or rejection of registrations is entirely at the discretion of the Championship officials.

1.5 CHAMPIONSHIP EVENTS

- 1.5.1 The **MINI CHALLENGE** will consist of race & test events for as set out in the calendar below:

Date(s)	Event	Test Day	Race Days	Venue	Races	Rounds	Org Club
16-18 April	Race Meeting	1	2	Donington Park	3	1,2,3	BARC
14-16 May	Race Meeting	1	2	Oulton Park Island	2	4,5	BARC
11-13 June	Race Meeting	1	2	Croft	2	6,7	BARC
8 July	Goodyear Tyre Test	1	0	Snetterton 300	N/A	N/A	N/A
30 Jul - 1 Aug	Race Meeting	1	2	Snetterton 300	3	8,9,10	BARC
13-15 August	Race Meeting	1	2	Knockhill	3	11,12,13	BARC
24-26 Sept	Race Meeting	1	2	Silverstone National	3	14,15,16	BARC
8-10 October	Race Meeting	1	2	Brands GP	3	17,18,19	BARC
				TOTAL	19		

- 1.5.2 Within each event the actual timetables will vary. Please refer to the specific Event Supplementary Regulations.
- 1.5.3 The Championship Organisers and Promoters reserve the right to cancel, postpone or substitute events in the MINI CHALLENGE for reasons of "force majeure" and no responsibility will be accepted for loss or damage incurred. (Motorsport UK regulation D11.1)
- 1.5.4 If any event is oversubscribed the organiser may at their discretion run Qualification Races and may add races in order to accommodate this.

2021 The Quaife MINI CHALLENGE Sporting & Technical Regulations

- 1.5.5 If an event is oversubscribed may at their absolute discretion give priority to Competitors entered for the entire championship.
- 1.5.6 If the event is oversubscribed the organisers may at their discretion alternatively select starters for the races using any of the following methods:
- (a) practice times, or
 - (b) handicap, or
 - (c) finishing order in a preceding race, or
 - (d) selection made with the object of placing the fastest driver at the front, or
 - (e) current positions in a championship, or
 - (f) ballot (method specified in writing in Supplementary Regulations, Final Instructions or by Bulletin).

1.6 POINTS SCORING

- 1.6.1 In respect of the championship all races will be points scoring, but a driver's worst 2 scores will be dropped at the end of season. If a driver's worst score is due to Disqualification then the drivers next worst score will be dropped. For the avoidance of doubt, Competitors are not allowed to drop scores caused by disqualification. Drivers may drop DNF, DNS and races not entered.
- 1.6.2 For each class points are scored by Drivers for each round on the following scale:

Position	Points	Position	Points
1st	50 pts	11th	24 pts
2nd	44 pts	12th	23 pts
3rd	40pts	13th	22 pts
4th	37pts	14th	21 pts
5th	34pts	15th	20 pts
6th	32pts	16 th	19 pts
7th	30 pts	17 th	18 pts
8th	28 pts	18 th	17 pts
9th	26 pts	19 th	16 pts
10th	25 pts	20 th and below	15 pts

Drivers who do not finish do not score points for their finishing positions, but are eligible for the following:

Fastest time in Qualifying in each class - 6 pts

Fastest race Lap in each class - 6 pts

Where 3 or more drivers are registered for the championship for the first time, points scored by those drivers will also count towards the Rookie Cup. Drivers who have finished in the top 3 in the championship any current or previous senior TOCA support championship or have ever entered a British Touring Car Championship season or a British GT Championship season will not be eligible for the Rookie Cup.

Where 3 or more drivers are registered for the championship for the second time, points scored by those drivers will also count towards the Graduate Cup. Drivers who have finished in the top 3 in the championship any current or previous senior TOCA support championship or have ever entered a British Touring Car Championship season or a British GT Championship season will not be eligible for the Graduate Cup.

Where 3 or more drivers aged 35 and over are registered, points scored by drivers aged 35 and over at the time of registration will also count towards the Directors Cup. If a

2021 The Quaife MINI CHALLENGE Sporting & Technical Regulations

driver has won the MINI CHALLENGE in the last 3 years they will not be eligible for the Directors Cup. Drivers who have finished in the top 3 in the championship any current or previous senior TOCA support championship or have ever entered a British Touring Car Championship season or a British GT Championship season will not be eligible for the Directors Cup.

If a dead heat is declared, all the Drivers concerned will score the average points for all positions which are drawn. For example 1st and 2nd are a dead heat. The points awarded will be $50+44=94/2=47$

- 1.6.3 In the event of a tie in championship points between two or more Competitors, the number wins achieved by the Competitors involved in the tie will be used to determine the overall final standing.

Should a tie still exist, it will be resolved:-

i) By taking into account the number of second places achieved; then third places etc. etc.

ii) By taking into account the number of Competitors (i.e. event finishers) beaten during the season by each Competitor.

Disqualification from the meeting will mean that scores from all races at that event will also be dropped.

- 1.6.4 All MINI CHALLENGE rounds will score points as per 1.6.2.

- 1.6.5 Competitors not registered for the Championship may be permitted on an individual round basis and will:

- (a) be deemed "Guest Competitors"
- (b) not score points and for the purpose of championship points scoring, their position will be ignored
- (c) qualify for event awards
- (d) comply with the eligibility criteria as prescribed in Article 1.3. above, with the exception of 1.3.1. (b) and 1.3.2. (b), as appropriate.

- 1.6.6 In order to score points, collect trophies and awards, all cars and Drivers competing in the MINI CHALLENGE may be required to display and wear the MINI CHALLENGE Sponsors' decals and badges in the nominated position on clothing and vehicles or may be required wear a championship race suit. Where a championship race suit is required dispensation to wear another race suit may be provided by the championship organisers.

- 1.6.7 Note the requirements of SR.4.concerning penalties.

- 1.6.8 Any Competitor in who has not presented a valid, complete and current JCW Log Book shall not be eligible to score championship points or collect trophies.

1.7 AWARDS

- 1.7.1 All Championship awards are to be provided by the MINI CHALLENGE, their associated sponsors and Total Track Ltd.

- 1.7.2 All trophies will be presented to the Driver(s). Drivers are required to attend presentations. Note SR6.1.12

- 1.7.3 Trophies or medals will be presented at each race to drivers as follows:

2021 The Quaife MINI CHALLENGE Sporting & Technical Regulations

1st, 2nd and 3rd Overall
1st Rookie
1st Graduate
1st Directors Cup

Additional awards may be given at the sole discretion of the Championship Organiser.

- 1.7.4 End of season awards are Trophies and will be presented as follows (see also SR1.6.3):

Motorsport UK Regulation D 7.1.12 applies.

The MINI CHALLENGE Annual Trophy to the MINI CHALLENGE driver, who accrues the highest number of points.

Additionally, the following trophies which may be kept will be awarded:

1st, 2nd and 3rd Overall

Where applicable - 1st Rookie

Where applicable - 1st Graduate

Where applicable - 1st Directors Cup

There will be a teams award for the top team operating at least 2 cars and no more than 4 cars. Points will be awarded to the team based on its top two finishing drivers in any qualification session or race. The points for these drivers will be added together to create the teams score for the session or race.

Where a team operate more than 4 cars the team may create a group of 2-4 drivers and treat each group as separate team for the purposes of the award. Groups must be communicated to the championship coordinator in writing prior to the start of the first qualifying session at the first race meeting. Where a driver does not enter a session the team may nominate a replacement driver, but the driver must not have been allocated to another team or group during the season. Privateer entries may group themselves together in groups of 2-4 drivers to create a team, but otherwise the same rules apply in respect of substitution.

In order to participate in the team award teams will need an entrants license. Privateer teams will need to arrange an entrants license for the group.

At the end of the 2021 season there may be a Sporting Driver award. This award will be decided by a panel of judges to include a representative from the championship sponsors. Criteria will include sportsmanship and driving standards.

- 1.7.5 Other Awards may be announced in MINI CHALLENGE Bulletins. Awards for the invitation class entrants are at the Organisers discretion
- 1.7.6 In the event of any Provisional Results or MINI CHALLENGE Points Tables being revised after any provisional awards presentations and such revisions affecting the distribution of any awards, the Competitors concerned must return such awards to the MINI CHALLENGE office in good condition within 7 days.
- 1.7.7 The MINI CHALLENGE Champion is required to attend the BARC Annual Awards Evening
- 1.7.8 Any annual awards must be returned to the Organisers before the last round of the following season's events.



MINI
CHALLENGE

2021 The Quaife MINI CHALLENGE Sporting & Technical Regulations

2021 The Quaife MINI CHALLENGE Sporting & Technical Regulations

2.1 SPORTING DISPUTES

- 2.1.1 Disputes on the Sporting Regulations and their application by the Championship which arise during the season will be settled by the MINI CHALLENGE Stewards in accordance with Motorsport UK Regulations G2.7 & 2.7.1, these Regulations and any Official Bulletins that have been issued.

The case for any dispute must be submitted in accordance with Motorsport UK regulations together with the appropriate Motorsport UK protest or appeal fee.

The MINI CHALLENGE Stewards' judgment will be subject only to the Right of Appeal to the Motorsport UK.

- 2.1.2 In order to maintain standards of conduct, the Championship Organisers will monitor all Officials/Observers reports of adverse behaviour at race meetings. If any individual is included on two such reports during one racing season the Championship Organisers will request the Clerk of Course at future race meetings to consider specific observation of that driver's conduct.

2.2 TECHNICAL DISPUTES

- 2.2.1 The Eligibility Scrutineer/Event Chief Scrutineer, in consultation where necessary with the Championship Technical Officers, reserve/s the right to check and ask to be removed and replace by the Team or Competitor, any suspect part directly with a standard part as supplied by Total Track Ltd, MINI or any of its nominated dealers or suppliers.

The Eligibility Scrutineer / Event Chief Scrutineer, in consultation where necessary with the Championship Technical Officers, also reserve/s the right to impound individual parts or the whole car without prior notification.

Parts or cars removed for checking elsewhere will be marked by official Motorsport UK approved seals and a certificate of sealing will be handed to the Competitor or his/her agent. (See current Motorsport UK Regulations)

- 2.2.2 Note the requirements of SR.4

- 2.3 **ONBOARD CAMERAS** in accordance with Motorsport UK Regulation J5.21 and the following regulations.

- 2.3.1 All Competitors in the MINI CHALLENGE Championship are required to carry front and rear facing onboard in car camera for the primary purpose of safety. Footage from the cameras may be used where there is an incident which is subsequently brought before the Clerk of the Course for investigation. The decision to review any such video footage is at the discretion of the Clerk of the Course and, or, the Stewards of the meeting.

- 2.3.2 It is the Competitor's sole responsibility to ensure safe installation and effective operation of the camera equipment. The front facing camera must be mounted and be angled to capture an image that provides a 'drivers' eye' view' that should include the steering wheel, 'dashboard', gearstick and a view of the circuit ahead with a field of vision of approximately 100 degrees. To aid identification the car number should be visible on the dashboard and each memory card labelled with the Competitor car number.

The rear facing camera should be mounted and be angled to provide a clear view out of the rear window providing a field of vision of approximately 100 degrees to include the entire rear window.

2021 The Quaife MINI CHALLENGE Sporting & Technical Regulations

Each camera shall be equipped with a memory card adequately sized to capture the entire track session. Each memory card shall be labelled with the Competitor car number and an 'F' to denote the front facing camera and an 'R' to denote the rear facing camera.

All cameras shall be mounted and/or programmed such that the images appear with correct orientation (i.e. the top of the view is at the top of the monitor)

- 2.3.3 At all times cameras must be fitted in accordance with Motorsport UK Regulations and be approved by the Chief Scrutineer in accordance with Motorsport UK Regulation J5.21.5. The mounting of any camera must be specifically approved by the Chief Scrutineer. Any mountings must use a mechanical means of attachment sufficiently robust to withstand anticipated stresses and vibration and must not present any sharp edges or projections in the vicinity of the driver's body or helmet. Where possible, a secondary means of attachment should be used. Suction mounts are not acceptable as the primary mounting method. Where cameras are fitted by professional TV or film companies, the Chief Scrutineer has discretion to approve non-mechanical mountings.
- 2.3.4 Fitting of cameras to helmets is only permitted in accordance with K10.3.3(d)
- 2.3.5 Registered Competitors may be loaned a camera by the Organiser, but this must not be relied upon. It will remain the property of the Organiser at all times. A deposit is required for the camera and its equipment which will be refunded once the equipment is returned in good working order. If the camera or its equipment is lost, stolen, damaged or broken whilst being loaned the deposit will be forfeit.
- 2.3.6 Competitors shall supply their own camera and record onto easily removable SD cards. If equipment other than that supplied by the Organiser is used the same conditions apply as for equipment supplied by the Organiser. Playback of the video footage must be possible at the event by regular means such as a laptop computer. The Competitor must provide the lap top to allow playback of the video footage and take the lap top to any/all judicial hearings. The Competitor must be able to control the lap top to be able to locate any footage that is required.
- 2.3.7 **Video footage may not be reviewed by the Competitor until the time for Protests has elapsed as per Motorsport UK Yearbook C5.2.1. Failure to comply may result in the sanctions provided for in 2.12.14 below.**
- 2.3.8 In the event of judicial action being instigated, all relevant onboard footage must be retained until the time period for conclusion of all judicial matters has elapsed.
- 2.3.9 Where it is necessary for a Clerk of the Course to review footage after an Event, such footage should normally be reviewed within a period of 7 days of the Event.
- 2.3.10 In the event that no video footage is available upon request (other than due to a proven defect with the equipment) sanctions may be applied. The burden of proof to establish the cause of such failure will lie with the Competitor.
- 2.3.12 All rights including copyright in relation to footage captured by on board cameras, (no matter whether the camera is owned by the Competitor or the Organiser/Promoter) will belong to the Organiser and/or Venue Owner and may not be shared or otherwise used for broadcast or commercial purposes or on social networking sites, forums or any other internet media without the express written permission of the Organiser and/or Venue owner/operator (if applicable).

2021 The Quaife MINI CHALLENGE Sporting & Technical Regulations

- 2.3.13 Any breach of camera regulations may be subject to the penalties provided for in Motorsport UK Regulation C2.1.1 and on a case by case basis; they may include but are not limited to:

- A reprimand or fine of up to £1,045
- Time Penalty
- Disqualification from the Race.
- Disqualification from the Meeting.

- 2.3.14 Competitors are reminded that in car footage must not be used in such a way as to risk bringing the MINI CHALLENGE or the sport into disrepute.

- 2.3.15 Competitors must make available on request in car camera footage for broadcast or use on MINI CHALLENGE social media, including, but not limited to posting the pole lap on social media platforms.

- 2.3.16 At any time before or during the season and at the sole discretion of the organisers, some or all Competitors may be required to use cameras supplied by the championship. Should this be the case, a rental charge of up to £150 plus VAT will be applied along with a refundable deposit of £100 plus VAT. If camera's, mounts, SD cards, chargers or batteries are lost or damaged the deposit will be forfeit.

2.4 TECHNICAL & SPORTING QUERIES

Any technical or sporting query must be made to the MINI CHALLENGE Office in writing. If the matter is technical in nature and relating to your own car the form in Appendix A of these regulations must be used and must be submitted at least 30 minutes before a competitive session. All technical request forms must be submitted at least 30 minutes prior to any session unless under special circumstances and/or agreed with the Eligibility Scrutineer. All queries will be answered in writing and may be published to all Entrants/Competitors.

2021 The Quaife MINI CHALLENGE Sporting & Technical Regulations

3. EVENTS & PROCEDURES

3.1 ENTRIES

3.1.1 Registration forms are available at www.minichallenge.co.uk

Supplementary regulations may also be distributed electronically.

3.1.2 Registered Competitors are responsible for sending in correct and complete entries to the MINI CHALLENGE Office, who will then forward them to the Organising Clubs.

3.1.3 All entry fees for events in the MINI CHALLENGE will be paid to the MINI CHALLENGE promoter, Total Track Ltd.

3.1.4 All correct and complete entries are to be acknowledged by the Organising Club of individual meetings directly to the MINI CHALLENGE office.

3.1.5 Incorrect or incomplete entries will be held in abeyance until they are complete and correct.

3.1.6 Any withdrawal of Entry made after acceptance of any entry, must be notified in writing to the Championship Coordinator and the organising club not less than 3 days prior to the event in question.

3.1.7 There will be no refund of entry fees and any entry fees unpaid will still be due.

3.1.8 Testing - A test day will usually be available, the day preceding the event, for Competitors to familiarise themselves with the circuit. This may be held under test day or track day rules. Entry for the official pre-race meeting test day is included in the championship entry unless otherwise stated. There may be occasions where the test day is not on the day preceding the event. The Championship organisers may, entirely at their discretion, cancel a pre-race meeting test day and allow all Competitors to attend a replacement test/track day without using one of their allowed test/track days (as per 3.1.10 below). Replacement test days must take place at least 2 complete days prior to the start of race meeting. The Championship organisers will endeavor to provide as much notice as possible and will refund a proportion of the entry fee equal to the cost of the test day cancelled, unless the cancellation is force majeure in which case no refund will be given.

3.1.9 There may also be a number of other official test days, including a media day which will also be subject to these regulations, but the entry may be at an additional cost. Attendance at official test days is not mandatory with the exception of any media day which are mandatory.

3.1.10 Other than official MINI CHALLENGE test days registered drivers may not take part in on-track activity as a driver at any other test or trackdays from 09/04/21 until the end of the final race meeting with the following exceptions:

Each registered driver may attend up to 7 additional test/trackdays, but attendance must be notified to the Championship Director at least 2 days in advance of the test day.

A driver entering part way through the season may test up until their first race meeting, but thereafter the testing limitations apply.

Drivers whose fastest recorded lap time in any session at the previous race weekend is more than 2% slower than the fastest lap time of the weekend by any driver may request authorisation from the Championship Director to attend an additional test/track day prior to the next race weekend. Permission must be requested at least 2 days before the

2021 The Quaife MINI CHALLENGE Sporting & Technical Regulations

proposed test event. These test days will be over and above the allowance of 7 test days normally allowed.

Teams are free to use cars on track at any time with drivers who are not registered for the Championship.

With the express written permission of the Championship Director registered drivers may take part in other race meetings. Permission must be requested at least 2 days before the event. Where permission is granted, the Championship Director may require the driver to agree to additional testing limitations to compensate for the additional track experience gained.

With the express written permission of the Championship Director registered drivers may take part in on-track activity where the purpose is for marketing/sponsor entertainment. Permission must be requested at least 2 days before the event and the driver may only use used dry tyres that have been previously nominated on a race meeting. Wet tyres may be used freely. Where permission is granted, the Championship Director may require the driver to agree to additional testing limitations to compensate for the additional track experience gained.

Each breach of these regulations regarding testing limitations will incur the following penalties:

The driver will not take part in a pre-race meeting official test day. The penalty must be taken at the earliest opportunity, typically being the next pre-race meeting official test day or if this is already being missed due to another penalty the next test pre-race meeting test day that the driver would otherwise attend. If this is not possible (for example if there is no pre-race meeting official test day) the penalty will be that the driver will be put to the back of the grid at the next race meeting. If this is not possible the Clerk of the Course may apply any other penalty deemed appropriate.

The driver will also have his/her tyre allowance for the next race meeting reduced by 2 new tyres for each breach of the testing regulations.

- 3.1.11 The closing date for entries is the Tuesday before the event.

3.2 BRIEFINGS

The Organising Club will notify Competitors of the times and location for all briefings in the Final Instructions either electronically, or at the event. Competitors must attend all briefings or be subject to a penalty.

3.3 PRE-RACE MEETING TEST DAY

- 3.3.1 There will usually be a pre-race meeting test day on the Thursday or a Friday immediately before a race meeting
- 3.3.2 There will usually be 2 x 45 minute sessions but may be other formats as required.
- 3.3.3 All Competitors will be allocated nominated pit lane positions based on garage numbers. This will be communicated before the race meeting.
- 3.3.4 An area may be fenced/marked off at the start of the pit lane to help facilitate checks of tyres to ensure only nominated tyres are used during the pre-race meeting test day.
- 3.3.5 If Competitors are found to be using tyres that have not been nominated they

2021 The Quaife MINI CHALLENGE Sporting & Technical Regulations

will be required to sit out the next test session unless it is the last test session of the day, in which case they will be put to the back of the grid for race 1 irrespective of their qualifying position.

The driver will also have his/her tyre allowance for the race meeting reduced by 2 new tyres for each breach of this regulation.

If a tyre is found in the pitlane that has not been allocated to any driver it will be confiscated.

- 3.3.6 Competitors must ensure that their teams only occupy the space directly in front of the nominated garage. Where teams operate multiple cars all cars from that team will be allocated garages sequentially. The pit lane positions will apply to qualifying and races. Where there are no garages, or insufficient garages, Competitors will be allocated an order to line up in the pit lane and it will be the Competitors responsibility to manage the available space accordingly. Failure to comply with this regulation may result in penalties on a case by case basis; they may include but are not limited to:

A reprimand or fine of up to £1,045
Time Penalty
Disqualification from the Session.
Disqualification from the Meeting.

3.4 QUALIFICATION PRACTICE

- 3.4.1 Should any Qualifying Practice session be disrupted the Clerk of the Course shall not be obliged to resume or re-run the session; the decision of the Clerk of the Course shall be final.

- 3.4.2 Each driver shall complete a minimum of 3 laps in the car to be raced, and in the correct session, in order to qualify (Motorsport UK Regulations Q4.5).

- 3.4.3 All Competitors will be allocated nominated pit lane positions based on garage numbers. This will be communicated in the drivers briefing or before. Competitors must ensure that their teams only occupy the space directly in front of the nominated garage. Where teams operate multiple cars all cars from that team will be allocated garages sequentially. The pit lane positions will apply to qualifying and races. Where there are no garages, or insufficient garages, Competitors will be allocated an order to line up in the pit lane and it will be the Competitors responsibility to manage the available space accordingly. Failure to comply with this regulation may result in penalties on a case by case basis; they may include but are not limited to:

A reprimand or fine of up to £1,045
Time Penalty
Disqualification from the Session.
Disqualification from the Meeting.

- 3.4.4 At the first race meeting each year the order in which cars/drivers will be positioned in assembly area will be determined by random draw. One car number from each class will be drawn from a hat/bag in the drivers briefing (or other random system). This driver will be positioned as the first to leave assembly in qualifying. All other drivers will be lined up in numerical order behind the first car to be drawn. For subsequent race meetings cars/drivers will

2021 The Quaife MINI CHALLENGE Sporting & Technical Regulations

be lined up based on their position in the Championship with the Championship leader positioned first and be first to leave the assembly area at the start of the session. Failure to comply with this regulation may result in penalties on a case by case basis; they may include but are not limited to:

A reprimand or fine of up to £1,045
Time Penalty
Disqualification from the Session.
Disqualification from the Meeting.

3.5 GRID POSITIONS

3.5.1 Each entrant will compete in one qualifying session, from which;

Race one grid positions will be determined by the Competitors' best qualifying time, as published by the official timekeepers and subject to any judicial matters.

Subsequent race grid positions will be determined by the Competitors' finishing position in the previous race, as published by the official timekeepers and subject to any judicial matters.

Except for last race of each event when the Starting Grid will be formed by the finishing order in the previous race, as published by the official timekeepers and subject to any judicial matters, but as amended below:

The top **6-10** inclusive in the class shall have their grid positions for the last race reversed, with the number to be picked at random by the winner of the previous race or someone nominated by the Organisers as soon as practical after the finish of that race.

All other classified finishers will be allocated grid positions in accordance with their finishing order from the previous race. Competitors not classified as finishers in the previous race will start in reverse retirement order. Note 4.2.2 penalties.

Where a grid penalty is to be applied the penalty will be applied after the grid has been reversed.

3.5.2 Non-finishing Competitors will be positioned in reverse retirement order behind the last car of their class on the grid, but in front of any Competitors serving penalties resulting in back of the grid starting positions

3.6 EVENT PROCEDURES

The meeting procedure for the Races will be distributed to Competitors by way of Official Bulletins; these must be read in conjunction with individual Event Supplementary Regulations which take precedence.

Foreign Events - Particular attention must be paid to requirements of foreign circuits, and FIA equipment and clothing requirements when competing abroad. See also Motorsport UK Yearbook, Appendix 3, Competing Abroad'.

Adverse Weather Procedures

3.6.1 At the discretion of the Clerk of the Course and in the event of a sudden change of weather the release of cars from Assembly Area may be delayed to facilitate the changing of tyres in the assembly area if not doing so might put the safety of drivers, teams or circuit staff at risk.

3.7 STARTS

2021 The Quaife MINI CHALLENGE Sporting & Technical Regulations

Unless modified by the Organising Club's Standing Regulations, the following regulations shall apply:-

Both Standing and Rolling Starts may be used, Competitors will be informed of the start procedures at the drivers briefing or before.

Standing Starts

- 3.7.1. All race start countdowns are to have a minimum elapsed period of 3 minutes from the time all cars are released to form up on the grid to the start of the Green Flag lap(s) in the formation specified on the licence for each circuit.
- 3.7.2 The minimum countdown procedures sequence shall be:
1 minute to start of green flag lap – start engines/clear grid.
30 seconds - visible and audible warning for start of green flag lap.
Green flag - Cars leave the grid to complete one green flag lap and return to the grid
- 3.7.3 Any car removed from the grid after the 1-minute stage or driven into the pits on the green flag lap shall be held in the pit lane and may start the race after the last car to take the start from the grid has passed the start line or pit exit lane whichever is the later.
- 3.7.4 Any drivers unable to start the green flag lap or start are required to indicate their situation as per current Motorsport UK regulation and any drivers unable to maintain grid positions on the green flag lap to the extent that ALL other cars are ahead of them, may complete the green flag lap but MUST remain at the rear of the last row of the grid but ahead of any cars to be started with a time delay.
- 3.7.5 Excessive weaving to warm-up tyres - using more than 50% of the track width and/or falling back in order to accelerate and practice starts, are prohibited.
- 3.7.6 A five second board will be used to indicate that the grid is complete. The red lights will be switched on five seconds after the board is withdrawn; the extinguishing of the red lights is the signal to start the race. In the event of any starting lights failure the starter will revert to the use of the National flag.

Rolling Starts

- 3.7.7 All race start countdowns are to have a minimum elapsed period of 3 minutes from the time all cars are released to form up the grid to the start of the Rolling Lap(s) in the formation as specified on the Track Licence for the Circuit.
- 3.7.8 The minimum countdown procedures/audible warning sequence shall be:
Rolling Starts: 2 x 2 Formation (subject to the track licence)

1 minute to start of Rolling Lap – Start Engines/Clear Grid.
30 Seconds - Visible and audible warnings for the start of the Rolling Lap.
Green flag - Cars leave the grid and follow the Pace Car
- 3.7.9 Towards the end of the Rolling Lap(s) the pace car will slow in order to bunch up the grid and then leave the circuit after extinguishing its roof lights indicating a start is imminent. The pole position driver will then control the pace of the field and the grid will continue at a similar speed on the approach to the start line, keeping a minimum of 2 car lengths to the car in front. The driver in 2nd position will be required to keep pace with the pole position driver and broadly in line, each row of cars behind should also remain broadly in line with the driver on the same row so that all cars remain paired. It will not be acceptable to move forward from your row. All cars will start racing when the red start

2021 The Quaife MINI CHALLENGE Sporting & Technical Regulations

light(s) are extinguished. No overtaking may take place until then. In the event that the starting light(s) fail the Starter will revert to using the National Flag.

- 3.7.10 Where there are more than one class sharing the grid at the start of the race each class' pole position driver will be responsible for maintaining a gap of at least 4 car lengths and no more than 10 car lengths behind the back of the grid in front. This will not apply to the driver who is pole in the class in the front grid. All other guidance in 3.7.9 will apply to the other class/s.
- 3.7.11 Any cars removed from the grid after the 1-minute stage or driven into the pits on Rolling Lap shall be held in the pit lane. They may start the race after the last car to take the start from the grid has passed the start line or pit lane exit, whichever is the later.
- 3.7.12 Any drivers unable to start the Rolling Lap or start are required to indicate their situation as per current Motorsport UK Regulations. Any drivers unable to maintain grid positions on the Rolling Lap to the extent that all other cars are ahead of them may complete the Rolling Lap. They **MUST** remain at the rear of the last row of the grid but ahead of any cars to be started with a time delay.
- 3.7.13 **Aborted Start:**
If the start is aborted prior to the pace car pulling off, the pace car will not extinguish his roof lights and will continue to lead the field around the circuit for an additional lap and a new start will be attempted. The race will not start until the pace car pulls off the circuit, the signal to start will not be given, and the start lights may remain at red. When this signal is given, all cars must exercise extreme caution and return slowly round the circuit maintaining their original grid positions stopping on the grid. The race start countdown procedure will then be repeated from the one-minute countdown point. At the discretion of the Clerk of the Course, the race distance may be reduced accordingly.

Safety Car Starts

- 3.7.14 Safety car starts may also be used at the discretion of the Clerk or the Course in accordance with Motorsport UK Yearbook Section Q, Appendix 2, 1.16.

3.8 RACE STOPS

As per Q5.4 of the current Motorsport UK Yearbook.

3.9 RE-SCRUTINEERING

- 3.9.1 Any vehicle involved in an accident, or having been modified in any way, subsequent to pre-event scrutineering, must be re-presented to the Motorsport UK Scrutineers for further examination.
- 3.9.2 The Clerk of the Course or Scrutineers may order that a vehicle be re-examined even if this involves stopping a vehicle whilst Practicing, Qualifying or Racing.

3.10 PITS AND PIT LANE SAFETY

- 3.10.1 Pits: Drivers and Entrants must ensure that the Motorsport UK, Circuit Management and Organising Club Safety Regulations are complied with at all times.
- 3.9.2 Pit lane: The outer lane or lanes are to be kept unobstructed to allow safe passage of cars at all times. The onus shall be on all drivers to take all due care and drive at minimum speeds in pit lanes.
- 3.9.3 Refuelling may only be carried out in accordance with the current Motorsport UK Regulation Q13.1.1 – 13.1.4, Circuit Management regulations and the SR's or Final Instructions issued for each Circuit/Meeting.

2021 The Quaife MINI CHALLENGE Sporting & Technical Regulations

- 3.9.4 Refuelling during qualifying and races is prohibited.
- 3.9.5 The Pit Lane Speed limit will be 48 km/h unless otherwise notified

3.11 RACE FINISHES

After taking the chequered flag drivers are required to: - Progressively and safely slow down, remain behind any Competitors ahead of them, return to the pit lane entrance as instructed, comply with any directions given by Marshals or Officials and to keep their helmets and gloves on and harnesses done up while on the circuit or in the pit lane and until arriving in Parc Fermé. No team members are allowed in Parc Fermé unless invited to do so by the Scrutineering team. No equipment (Other than firefighting equipment if required) may be passed to the driver in Parc Fermé unless pre-agreed by the Scrutineering team. All personal equipment must continue to be worn or left in the car,

3.12 RESULTS

All Practice timesheets, grid sheets and Race Results are to be deemed PROVISIONAL until all vehicles are released by Scrutineers after post-practice/race scrutineering and/or after completion of any judicial or technical procedures.

3.13 LAP TIMING

- 3.13.1 Use of approved working Timing Transponder, is mandatory for all official test days, pre-race meeting test days, qualifying sessions and races. Replacement and hire units are available through the event timing service supplier, and will be at a cost to the Competitor. Failure to fit a working transponder may result in times not being recorded. Where there is repeated failure to fit a working transponder a Competitor may be subject to any of the following penalties at the discretion of the Clerk of the Course:

- A reprimand or fine of up to £1,045
- Time Penalty
- Disqualification from the Session.
- Disqualification from the Meeting.

3.14 OPERATION OF SAFETY CAR

- 3.14.1 The Safety car will be brought into operation to neutralise a race upon the sole decision of the Clerk of the Course, in accordance with Motorsport UK Yearbook Section Q.

3.15 CoC TO DRIVER COMMUNICATIONS

- 3.15.1 A One-Way Receiver under the control of the CoC is mandatory for all Competitors at every event in Qualifying and Races. Competitors may purchase a Raceceiver from Total Track or it's nominated supplier. A Competitor not wearing a working Raceceiver in qualifying or a race will not be allowed to take their start position until rectified. If the problem is not rectified in time to take up their rightful start position a Competitor may start from the pitlane once the Raceceiver is worn and working. The Raceceiver must be connected and working until the driver reaches parc ferme.

Raceceivers can be purchased from Total Track or it's nominated supplier:

Raceceiver Legend Plus - Price is £180 + vat, but subject to change
LDR Performance Tuning.
Email: lawrence@ldrperformancetuning.com



MINI
CHALLENGE

2021 The Quaife MINI CHALLENGE Sporting & Technical Regulations

2021 The Quaife MINI CHALLENGE Sporting & Technical Regulations

4. PENALTIES

4.1 INFRINGEMENTS

4.1.1 Technical infringements arising from post Qualifying or Race Scrutineering or from Judicial Action:

Minimum Penalty as per Motorsport UK Regulation C3.3. unless a Technical infringement is, in the opinion of the Eligibility Scrutineer not materially performance enhancing, in which case the Clerk of the Course may entirely at his discretion, instead issue a Technical Warning Notice. If 3 or more Technical Warning Notices are issued the Clerk of the Course, may, entirely at his discretion, apply standard Motorsport UK penalties as per Motorsport UK Regulation C3.3 or may issue further Technical Warning notices.

4.1.2 Arising from post event scrutineering or Judicial Action:

Minimum Penalty as per the provisions of Motorsport UK Regulations C3.5.1 a) & b).

For infringements deemed to be of a more serious nature the Clerk of the Course and/or Stewards of the Meeting are to invoke the provisions of Motorsport UK Regulation C3.5.1 c).

4.1.3 Deliberate or repeated Technical Infringements will be referred to the Championship Stewards for consideration of Disqualification from the Championship, of the Car, Driver and/or Entrant.

4.1.3 Infringements of non-technical Motorsport UK Regulations or the Sporting Regulations issued for the MINI CHALLENGE in accordance with the current Motorsport UK Judicial Procedure Regulations; any such penalties may affect a Competitor's eligibility for points and awards.

4.2. DRIVING STANDARDS AND PENALTIES.

4.2.1 To maintain standards of conduct, Motorsport UK and Championship officials will monitor race officials and observers reports for adverse behaviour at race meetings. Any adverse reports could lead to official Motorsport UK action in accordance with the Judicial Procedure detailed in current Motorsport UK Yearbook plus the following:

4.2.2 Any Competitor who is penalised during an Event and as a result receives an allocation of penalty points on their race licence in accordance with Motorsport UK regulations will receive a grid slot penalty at the next race for the Championship at which they compete in line with the penalties shown below. The individual grid slot penalty will depend on the severity of the penalty imposed current Motorsport UK Yearbook C2.1.4 – C2.1.8 as follows:

- i) Verbal warning – 0 points

Where a driver receives 3 x verbal warnings during the season they will receive a 10 place grid penalty. If a driver receives further verbal warnings they will receive a 10 place grid penalty for the next race each time the total reaches another 3 x verbal warnings.

- ii) Formal written reprimand – 2 points, no grid penalty

- iii) Fine, time or grid place penalty – 3 points & 3 place grid penalty

2021 The Quaife MINI CHALLENGE Sporting & Technical Regulations

(For the avoidance of doubt, in the event that such as a 5 place grid place grid penalty is imposed this will incur 3 penalty points on the licence plus the additional 3 place grid penalty. Accordingly the actual number of grid places dropped will be 8.)

iv) Disqualification from Qualifying or Race – 4 points & 10 place grid penalty

v) Disqualification from the meeting – 6 points & 10 place grid penalty

Any grid penalty will mean that a Competitor will be moved back the appropriate number of grid slot places from their grid position (i.e. if a Competitor with a four grid slot penalty had a qualifying time that was good enough for pole position then the Competitor will start fifth on the grid). For the avoidance of doubt, if the offence occurs in the final round of the Championship the penalty detailed below will apply.

If for any reason the imposition of this grid penalty is impractical (such as the Competitor's qualifying time or race result etc) the Competitor will start the next round undertaken from the pit lane, joining on the first racing lap. If the offence occurs in the final round of the season, a time penalty of up to a maximum of 30 seconds will be added to the elapsed race time of the Competitor."

Any Competitor found guilty of contravening these Regulations (Sporting or Technical) may be reported to the Clerk of the Course or Stewards of the Championship for the possible imposition of further penalties which may be imposed separately or combined at the discretion of the Championship Stewards and may include the following.

- a) A financial penalty of up to £5,000.
- b) The loss of Championship points, up to a maximum of 36 (thirty-six) points even if this penalty results in a negative points total
- c) Disqualification from a fixed number of races within the Championship
- d) Removal from the Championship in its entirety

Competitors will also automatically receive Championship points penalties as follows:

A Verbal Warning will incur an automatic 5 championship point deduction per warning

For the first 6 points on a license during the season there will be a 10 championship point deduction per point on license.

Any further points on a license during season will incur a 20 championship points deduction per point on license

For the avoidance of doubt:

- 1 license point = 10 championship points deduction in total
- 2 points = 20 points championship points deduction in total
- 3 points = 30 points championship points deduction in total
- 4 points = 40 points championship points deduction in total
- 5 points = 50 points championship points deduction in total
- 6 points = 60 points championship points deduction in total
- 7 points = 80 points championship points deduction in total
- 8 points = 100 points championship points deduction in total
- 9 points = 120 points championship points deduction in total
- 10 points = 140 points championship points deduction in total
- 11 points = 160 points championship points deduction in total
- 12 Points = 180 points championship points deduction in total

- 4.2.3 Breaches of driving standards will be dealt with firmly. If the Clerk of the Course wishes to view video evidence from the nominated TV Company, on-board judicial cameras, circuit cameras and/or data-logged evidence in order to assist with his enquiry

2021 The Quaife MINI CHALLENGE Sporting & Technical Regulations

into a breach of driving standards, he may order that the results will automatically remain provisional for 30 days (or up until the start of qualifying at the next event whichever is soonest) and he may take judicial action at a later date, which will usually be within 30 (thirty) days in that period. However, the use of video evidence and/or data-logging evidence in all circumstances is at the sole discretion of the Clerk of the Course.

The Championship Coordinator or Director may also, within 30 (thirty) days of the Event, be entitled to request the Clerk of the Course, or the Championship Stewards, to enquire into any matter, notwithstanding that the Clerk of the Course and/or the Stewards of the Meeting may or may not have already investigated the incident. The Clerk of the Course or Championship Stewards will be empowered to take further action if they deem it necessary in accordance with the above. See SR4.2.2 for penalties.

Irrespective of race results being final - grid penalties can be applied to any subsequent race start, and if the offence occurs at a round of the final event of the published calendar, a time penalty of up to a maximum of 30 seconds can be added to the elapsed race time of the Competitor.

- 4.2.4 Competitors who claim to have received clarifications or rulings on the Championship Regulations must be able to produce on demand written confirmation of such rulings.

Only Championship Stewards are empowered to make rulings on MINI CHALLENGE Regulations.

- 4.2.5 The Championship Director or Championship Coordinator may request the Championship Stewards to hold a hearing into any alleged breach of the Regulations for further penalties including but not limited to removal from the Championship.

2021 The Quaife MINI CHALLENGE Sporting & Technical Regulations

5. MINI CHALLENGE JCW Class Technical Regulations

5.1 INTRODUCTION

5.1.1 **The following Technical Regulations are set out in accordance with the Motorsport UK specified format and it must be clearly understood that if the following texts do not clearly specify that you can make a modification/change you must work on the principle that you cannot.**

5.1.2 Cars must comply with the Technical Regulations published by the Organisers and Promoters for **The MINI CHALLENGE** throughout qualifying and race events. See also SR.2.2 and SR.4.

5.1.4 Standard: The word 'standard' used within these technical regulations as a description of components is to be interpreted as per 'Standard Part' defined in Section B – Nomenclature & definitions in the current Motorsport UK Yearbook.

Specified components from the manufacturer (MINI/BMW) and MINI CHALLENGE parts list are not permitted to be modified beyond the repair or adjustment processes specified by manufacturer.

Checking of eligibility of all parts will be by comparison to parts supplied by Total Track Ltd from the MINI CHALLENGE Parts Shop. This applies when a part number is displayed on the part or where the part does not have a part number displayed. Entrants should check parts used are eligible by comparing to parts in the MINI CHALLENGE parts shop.

For the avoidance of doubt, if a part is not a Championship Part it must be a BMW/MINI Original Part, pattern parts are not allowed unless specifically stated.

It is permitted to engrave or otherwise mark parts to help with identification and lifeing

5.1.5 Unless specified otherwise, the following regulations apply.

5.1.6 Scrutineering Protocol

5.1.6.1 The Championship Organisers will appoint a permanent Eligibility Scrutineer who, with his Team, will be responsible for the scrutineering of the vehicles for the qualifying sessions and races of the Championship

5.1.6.2 For scrutineering, the Entrant / Driver must present the competing vehicle and mandatory Entrant / Driver safety equipment. The vehicle must be submitted as used in the Championship and must correspond to all applicable Technical Regulations.

5.1.6.3 A completed JCW log book for each vehicle must be correctly submitted, unless the Eligibility Scrutineer requests otherwise.

5.1.6.4 Aside from the Eligibility Scrutineer, the vehicles may also be subject to eligibility scrutineering during and after the Event. Vehicles will be selected at the sole discretion of the Eligibility Scrutineer and/or his nominated representative. The Eligibility Scrutineer and / or his nominated representative will make random checks in addition to scheduled scrutineering checks for vehicle eligibility throughout Events. Any infringement will be subject to a report to the Clerk of the Course.

5.1.6.5 Entrants/Drivers must comply with the directives of the Eligibility Scrutineer and/or his nominated representative in respect of scrutineering and of re-scrutineering after the Event.

2021 The Quaife MINI CHALLENGE Sporting & Technical Regulations

- 5.1.6.6 After each qualifying session and race the vehicles must be presented directly for scrutineering. Any area deemed necessary by the Eligibility Scrutineer and / or his nominated representative will be subject to Parc Fermé conditions with no exceptions. This will include the track from the Finish Line to the scrutineering area, the waiting area in front as well as the track from the scrutineering area to Parc Fermé, but all areas may be used if necessary.
- 5.1.6.7 Public and Team personnel must not enter Parc Fermé unless invited by the Eligibility / Safety Scrutineer and/or his nominated representative. Should unauthorised Team personnel be present in these areas, they render their car liable to exclusion from the qualifying session or race. Any breach to Parc Fermé regs will be reported to the Clerk who may impose penalties as appropriate. At their discretion the Clerk of the Course or Organisers may assign other penalties to any driver / Team breaching Parc Fermé regulations. On request of the Eligibility / Safety Scrutineer, the Parent or Legal Guardian of the driver will be permitted in Parc Fermé.
- 5.1.6.8 Cars may be held in Parc Fermé for a minimum of 20 (twenty) minutes after each qualifying session and race until released by the Eligibility / Safety Scrutineer.
- 5.1.6.9 At any time the Championship Organisers reserve the right to scrutineer any component or vehicle in the presence of the permanent Eligibility / Safety Scrutineer and one other scrutineer at the Total Track workshop or at a service partners premises. An invited member of the Team may also be present. Removal of components from the car may be required at the Event or at the Total Track's workshop at the discretion of the Eligibility / Safety Scrutineer. After thorough scrutineering of the parts, the result will be submitted to the Clerk of the Course.
- 5.1.6.10 In the case of a breach of the Technical Regulations or a breach of the procedure surrounding the Technical Regulations, any costs associated with scrutineering and/or eligibility inspections (including, but not limited to transportation, checks, inspections, rebuilds, etc.) will be the sole responsibility of the Entrant.
- 5.1.6.11 The assembly and dismantling of the vehicle(s) is solely the responsibility of the Entrant(s). Reimbursement of expenses for these measures may not be claimed. Exceptions to this may include appeal / protest according to Section C of the "Motorsport UK Yearbook".
- 5.1.6.12 The Championship Organisers may nominate a chassis dyno that may be used to assist the Eligibility Scrutineer. At any time the Championship Organisers or Eligibility Scrutineer reserve the right to test a vehicle on the chassis dyno machine and may use any data from the dyno machine as guidance and to assist with their determination of eligibility. Competitors / entrants must sign any associated indemnities to allow their car to be tested on the dyno.
- 5.1.6.13 In the event of a car being dyno tested after a qualifying session or race the driver/Team will be informed by the Eligibility Scrutineer. The car must then be left in Parc Fermé until it is collected by a designated Total Track official.

5.2 GENERAL DESCRIPTION

- 5.2.1 The MINI CHALLENGE JCW Class is only open to vehicles complying with the following regulations and being supplied by Total Track Ltd or it's nominated agent and have been approved and appropriately sealed by the Organisers. Only cars bearing official cage identification tags and are eligible.

The Organisers reserve the right to equalise performance of any invitation or guest car, for example by the addition of ballast or modifying electronic control parameters. The

2021 The Quaife MINI CHALLENGE Sporting & Technical Regulations

Organisers also reserve the right to allow modifications to facilitate the use of cars by drivers with disabilities.

- 5.2.2 The Championship Organisers, promoters, sporting & technical team are not responsible for the ongoing preparation of the competition cars. They are present to give advice only on sporting & technical matters.

The responsibility for the preparation, maintenance & compliance of the car, throughout the event, rests entirely with the Competitor or where applicable the entrant. All cars must be maintained to a high standard and presented in a clean condition, so as not to bring the championship into disrepute and to ensure that new evidence of contact between cars can be easily seen.

- 5.2.3 All Technical reports, post event summaries, bulletins and regulation amendments or additions will be posted electronically. It is the driver's responsibility to monitor communications.

- 5.2.4 Bulletins will be issued in accordance with Motorsport UK Regulation D11.1.3

- 5.2.5 The Championship Organisers or Scrutineers may seal any part at anytime and where this is done the championship may arrange for sealed parts to be checked at any time until 30 days after the end of the season and shall not be limited to undertake checks within 30 days of the sealing taking place.

5.3 SAFETY REQUIREMENTS

- 5.3.1 Motorsport UK Safety Regulations apply as relevant.

- 5.3.2 Throughout any competition, practice, qualifying or event, drivers must wear flame resistant overalls (covering arms, legs and the torso to the neck), gloves and shoes together with a helmet, all of which must comply with Motorsport UK regulations (see Q10). It is recommended that flame resistant balaclava, socks, and underwear are worn (see K9). The use of a FIA homologated Frontal Head Restraint (FHR) device is mandatory.

- 5.3.3 Events held abroad may require mandatory use of current FIA homologated safety equipment e.g. overalls, helmet, FHR device, harness, seat.

5.4 GENERAL TECHNICAL REQUIREMENTS AND EXCEPTIONS

- 5.4.1 Eligible Cars are 'JCW Class' MINI CHALLENGE Cars as built and supplied by Total Track or it's nominated agent. No other cars are eligible. No modifications are permitted except as specified hereafter.

- 5.4.2 Notwithstanding these Technical Regulations it is the Competitor or Entrants responsibility to ensure their car complies with Motorsport UK General Regulations section J as appropriate and the Supplementary Regulations of any event.

- 5.4.3 The use of parts other than MINI CHALLENGE control parts or where no control part is specified the BMW MINI F56 Cooper S 3 Dr 2lt Petrol Hatch 2014 - 2021 Build Date RHD UK spec OE part is prohibited unless approved by the Organisers.

5.5 CHASSIS/SHELL

a) The chassis must remain to the standard JCW class specification in construction and material. Reinforcing, removing or adding material to the chassis is not permitted. Chassis must display the official MINI CHALLENGE identification tag. Removal of underbody sealer is not allowed.

2021 The Quaife MINI CHALLENGE Sporting & Technical Regulations

- b) Only replacement Shell Championship Part No MCF56065 or MCF56065.1 are eligible.
- c) Shell repairs using parts or materials that are not available from MINI dealers or MINI CHALLENGE are strictly prohibited. Shell repairs using parts not for sale from MINI dealers may only be carried out by Total Track Ltd, it's nominated agent or alternative supplier by prior written agreement from Total Track.
- d) Competitors are required to record the JCW Chassis/Cage Number section of the JCW Log Book (Appendix B) and present it to the Championship Eligibility Scrutineer before competing in the MINI CHALLENGE and if required complete the section again on request from the Championship eligibility scrutineer.
- e) The log book must also be updated and presented to the Championship Eligibility Scrutineer should a Competitor re-shell a car or change cars during the season. The new form must be submitted prior to the new shell/car being used. For the avoidance of doubt it is not necessary for all Competitors to agree for a car to be re-shelled between race meetings, entrants may make the decision unilaterally.
- f) It is permitted to paint the exterior of the shell and engine bay in a different colour or vinyl wrap the exterior of the shell.

5.6 BODY PANELS/EXTERIOR

5.6.1 Modifications are not permitted other than those carried out or authorised by Total Track or its nominated agent.

5.6.2 a) Eligible Panels & Parts:

GRP Front bumper championship part number MCF56001 with GRP Splitter removed may be used with Splitter Bib championship part number MCF56001BIB and Splitter Assembly championship part number MCF56001SPL

GRP Front bumper championship part number MCF56001.2 may be used with Splitter Bib championship part number MCF56001BIB and Splitter Assembly championship part number MCF56001SPL

GRP Brake Ducts championship part number MCF56002 are mandatory. It is permitted to use tape to reduce airflow to manage brake temperatures. Tape may be fitted on the entrance or exit of the brake cooling ducts.

Additional Brake Duct kit championship part number MCF56002.1 is optional

GRP Bonnet championship part number MCF56003 with Bonnet Vents championship part number MCF56003V fitted in the specified position are eligible

GRP Bonnet with integrated Bonnet GRP Vents championship part number MCF56003A is also eligible

Bonnet Pin clips championship part number MCF56004C are mandatory

Bonnet Pins championship part number MCF56004P are mandatory

Bonnet Mounts Front & Rear championship part number MCF56056 are mandatory

GRP A Panels championship part number MCF56005 are mandatory

Championship specification doors championship part no MCF56062 and MCF56063 are mandatory

Door Cards championship part no MCF56069 and MCF56070 are mandatory

GRP Sills championship part number MCF56007 are mandatory

Roof Vent championship part number MCF56008 is mandatory, it is permitted to tape up the external aperture to stop ingress of water only when any car in a session has run wet tyres at any time during a session. If wet tyres have not been used on any car at anytime in a session, taping of the roof vent is not allowed in that session.

Championship specification Rear Quarter Panels championship part number MCF56060 and MCF56061 are mandatory

GRP Rear arch trims championship part number MCF56009 are mandatory

GRP Rear bumper championship part number MCF56010 is mandatory

2021 The Quaife MINI CHALLENGE Sporting & Technical Regulations

Championship specification Rear Bumper Crash Bar/Carrier MCF56078 is mandatory
Championship specification Rear Bumper Guides (Plastic NS and OS) MCF56079
MCF56080 are mandatory

GRP Venturi championship part number MCF56011 are mandatory

Exhaust Centre Plate MCF5608 is mandatory and must be fitted at all times

GRP Rear Wing championship part number MCF56012 is mandatory

Championship specification Boot Lid championship part number MCF56064 is mandatory

Championship specification Front Crash Bar championship part number MCF56066 is mandatory

Championship specification Front NS Rad Panel Carrier championship part number MCF56067 is mandatory

Front Rad Cowl kit championship part number MCF56068 or MCF56083 are mandatory and must be augmented with seal kit part number MCF56084 between the cowl and radiator/s

Championship specification Roof Skin championship part number MCF56073 is mandatory

Championship specification NS Chassis Leg championship part number MCF56074 is mandatory

Championship specification OS Chassis Leg championship part number MCF56075 is mandatory

b) The standard BMW MINI 3 Dr 2lt Petrol Turbo Hatch 2014 - 2021 Build Date RHD UK spec OE radio aerial must be fitted, no shark fin style aerials are allowed.

c) The taping of joints is not permitted unless prior approval has been gained from the scrutineer to use tape as a means of repairs between or during races. Prior approval must be obtained through the completion and submission of a Technical Query form to the Chief Scrutineer before the race or qualifying session.

d) Taping of brake duct apertures to control brake cooling is permitted.

5.6.3 GRP parts may be repaired by Competitors but only with pre-approval by the championship Scrutineer. Only tape, vinyl or GRP may be used. No strengthening, additions or changes may be made to the standard parts. The scrutineer's decision in respect of eligibility will be final.

5.6.4 The use of steel Tow Straps championship part number MCF56054.1 are mandatory

5.6.5 Lifting access holes must remain accessible but covered with the designated marker stickers as supplied.

5.6.6 Windscreen and windows must be the standard BMW MINI 3 Dr 2lt Petrol Turbo Hatch 2014 – 2021 Build Date RHD UK OE spec and should conform to MOTORSPORT UK Yearbook "Sections J and Q." Pattern Windscreens are allowed, but must be glass, not polycarbonate and must be a similar colour to the original equipment, i.e. green tinted.

The Chief scrutineer or eligibility scrutineer at the event will make any final decision of the suitability or condition of any damage visible on any fitted glass screen or window at any time during the event.

It is permitted to apply clear film to the all windows so as to reduce the risk of breakages.

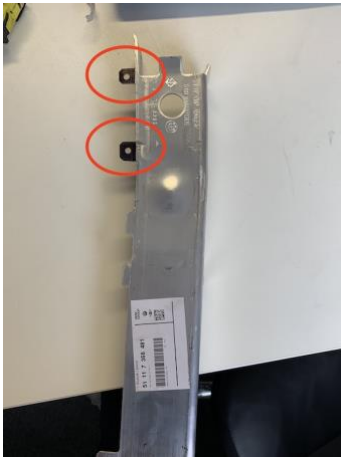
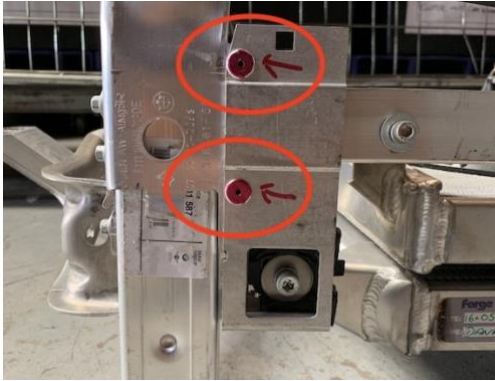
5.6.7 MINI CHALLENGE Spec Rain Light championship part number MCF56019 is mandatory

5.6.8 Union Jack Rear Light Cluster Drivers Side is mandatory BMW Part Number 63217435133

2021 The Quaife MINI CHALLENGE Sporting & Technical Regulations

Union Jack Rear Light Cluster Passenger Side is mandatory BMW Part Number 63217435134

- 5.6.9 It is permitted to modify bmw part number 51 11 7 368 481 by removing the rivets and plastic tabs as shown in the images below:



5.7 INTERIOR

- 5.7.1 Modifications are not permitted other than those carried out or authorised by Total Track or its nominated agent or detailed below.

- 5.7.2
- a) Any FIA homologated competition seat may be used
 - b) Any Quick Release Steering wheel may be used subject to Motorsport UK regulations - Note K14.1.3
 - c) Use of plumbed in fire extinguisher system MCF56013 is mandatory and must be working at all times when on circuit and in Parc Fermé.
 - d) The extinguisher bottle must be mounted in the standard position at the far rear of the front passenger seat
 - e) GRP Dash championship part number MCF56014 only is mandatory. It is permissible to wrap, paint or flock the dash.
 - f) MINI CHALLENGE Specification Switch Panel championship part number MCF56015 is mandatory

2021 The Quaife MINI CHALLENGE Sporting & Technical Regulations

- g) MINI CHALLENGE spec Body Loom championship part number MCF56016 or MCF56016.1 are mandatory
- h) MINI CHALLENGE spec Steering Column championship part number MCF56017 is mandatory. The length of the column may be changed as long as the original strength is maintained. The Chief Scrutineers decision will be final.
- i) MINI CHALLENGE Uprated PAS ECU championship part number MCF56091 is optional. The use of PAS Heatsink championship part number MCF56093 is optional.
- j) MINI CHALLENGE Specification Steering rack championship part number MCF56076 is mandatory
- k) The use of Lock Stops championship part number MCF56095 is optional
- l) The use of additional or alternative interior mirrors is allowed.
- m) The use of window nets is allowed.
- n) The use of film attached to window glass is allowed.
- o) The fitting of additional driver cooling package championship part number MCF56086 is optional

5.8. RIDE HEIGHTS

Ride heights will be measured using the official championship ride height rollers, with the driver seated in the driving seat, with all race equipment (race suit, helmet, gloves, boots and FHR device) and with the car positioned in the designated area. The ride height measuring area will be communicated to Competitors when they sign in or as soon as possible thereafter. The ride height area will be marked to show the required position of the car.

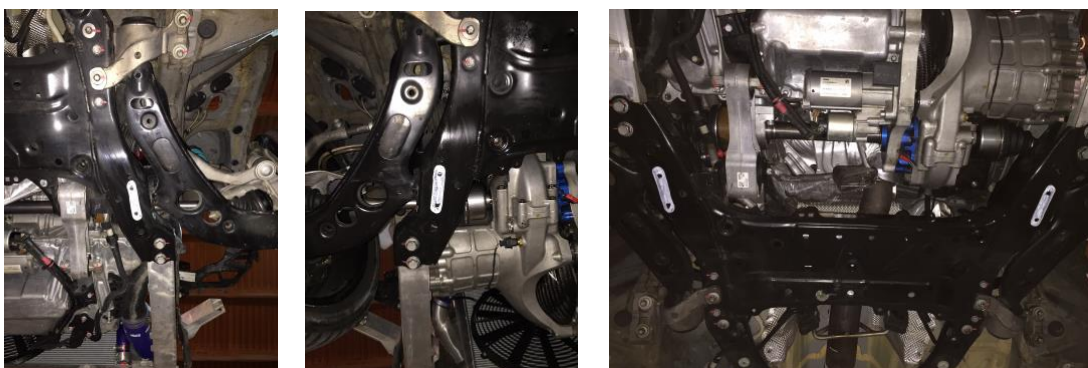
Front - 80mm

The Datum point for the front ride height is the lowest point of the front subframe as shown below.

The roller will be inserted under the car from behind the front wheel to measure from the Datum point.

Please note that both the Left (Passenger side) and Right (Drivers Side) datum points need to meet the minimum ride height.

The Subframe must not be altered in anyway, including removing material.



2021 The Quaife MINI CHALLENGE Sporting & Technical Regulations

Rear - 125mm

The Datum point for the rear ride height is the rear most exhaust tunnel strap bolts as shown below.

The roller will be inserted under the car from directly under the exhaust tailpipe to measure from the Datum point.

Please note that both the Left (Passenger side) and Right (Drivers Side) datum points need to meet the minimum ride height.

The bolts must not be altered in anyway, including removing material.



5.9 ENGINE

- 5.9.1
- a) Only engines championship part number MCF56020 and with a 2020 or 2021 Calibration Certificate supplied by Total Track or its nominated agents and bearing their seals will be eligible.
 - b) Engines will be sealed by the Championship Organisers or their nominated agent. Seals must not be broken under any circumstances. If seals are broken the engine will be ineligible unless a full internal inspection is carried out by Total Track or its nominated agent. The inspection will be at the Competitors cost. It is the Competitors responsibility to ensure the correct seal numbers are recorded on any paperwork.
 - c) Engine maintenance and rebuilds may only be carried out by Total Track or its nominated agent
 - d) Only Turbo and wastegate assembly championship part number MCF56021 supplied by Total Track or its nominated agent are eligible
 - e) Turbos will be sealed by the Championship Organisers, Turbo Supplier or their nominated agent. Seals must not be broken under any circumstances. If seals are broken the turbo and wastegate assembly will be ineligible unless a full internal inspection is carried out by Total Track or its nominated agent. The inspection will be at the Competitors cost. It is the Competitors responsibility to ensure the correct seal numbers are recorded on any paperwork.
 - f) Turbo maintenance may only be carried out by Total Track or its nominated agent
 - g) Wastegate vac pipe assembly championship part number MCF56022 is mandatory

2021 The Quaife MINI CHALLENGE Sporting & Technical Regulations

- h) The use of Intercooler championship part number MCF56023 is mandatory.
- i) The use of Air Intake System championship part number MCF56024 is mandatory and the intake must be fitted as per image below. It is permitted to use filter oil to coat the filter to reduce the risk of debris passing through the filter.



- j) The use of Radiator championship part number MCF56025 is mandatory
- k) The use of fan and fan fittings championship part number MCF56026 is mandatory
- l) Oil pressure sensor championship part number MCF56053 must be fitted and working at all times
- m) Engine Bush Kit (Lower Engine Mount Large Bush) MCF56082 only is eligible
- n) The use of championship engine oil cooler kit part number MCF56085 is mandatory
- o) The Championship may require any car to be dynoed using the Championship Hub Dyno at any time, for the purpose of observing operation of the engine, logging data relating to the operation of the engine or identifying engine performance which may be abnormal. Dyno results may only be used to help identify a potential breach of regulations, or abnormal operation. Dyno power results in themselves may not be used to prove a breach of these regulations
- p) It is permitted to remove the rubber turbo heatshield extension from the Turbo heatshield. The rubber extension that can be removed is shown in the image below:



- q) It is permitted to use any water based coolant mixed with anti-freeze. It is also permitted to add coolant improvers like (but not limited to) Water Wetter to the coolant mix. For the avoidance of doubt waterless coolants are strictly prohibited.

2021 The Quaife MINI CHALLENGE Sporting & Technical Regulations

- 5.9.2 a) Additional Motorsport UK seals may be fitted to engines or turbos at any time and any paperwork issued as per Motorsport UK Bluebook. Where seals are fitted parts may be sent away for inspection at anytime from when the seal is fitted until the end of the season rather than being limited to 30 days from when the seal is fitted.
- b) It is strictly forbidden for a Competitor or his agent to remove or tamper with the Motorsport UK or Championship seals. Should these seals be damaged or removed for whatever reason except under the direction of the Eligibility Scrutineer the car must not be used in competition or qualification practice until the Eligibility Scrutineer has inspected the engine and refitted the correct seals. The Eligibility Scrutineer may require that the engine, turbo or any other part be removed and taken to an approved venue to be dismantled for inspection and the cost of this, and subsequent rebuild, will be borne by the Competitor.
- c) All instances of broken seals will be logged and reported to the Clerk of Course/Championship Organisers.
- d) Should seals be required to be removed during maintenance, written permission will be required from the Eligibility Scrutineer and a removal number issued. This may be obtained by email to technical@minichallenge.co.uk. The removed seal must be returned to the Eligibility Scrutineer c/o the CHALLENGE technical official with the seal section intact.
- e) Competitors are required to complete JCW Engine & Turbo fields of the Log Book (Appendix B) before competing in the MINI CHALLENGE and when the engine or turbo is changed. The section of the Log Book must also be completed again if required by the Championship eligibility scrutineer.
- f) The section of the Log Book form must also be updated and presented to the Championship Eligibility Scrutineer should a Competitor change engines or have an engine rebuilt. The updated Log Book must be submitted prior to the new engine being used.
- 5.9.3 a) ECU & Direct Injection driver championship part number MCF56027 or MCF56027.1 are mandatory.
- b) MINI CHALLENGE spec engine loom championship part number MCF56028 or MCF56028.1 are mandatory.
- c) Fuel Pump Driver with uprated connectors championship part number MCF56029 or MCF56029.1 is mandatory
- d) MINI CHALLENGE Spec Throttle Position Sensor championship part number MCF56018 is mandatory
- e) MINI CHALLENGE Specification Boost control valve Part No MCF56059.1 displaying two MINI CHALLENGE hologram stickers is mandatory.
- f) The ECU of each vehicle is calibrated to MINI CHALLENGE approved specification. The ECU calibration file and/or firmware may be changed at any time and it shall not be necessary for the championship to seek permission from the Competitor, entrant or car owner.
- g) The Championship Organisers, Eligibility Scrutineer or Technical officers reserve the right to recalibrate or change or swap ECUs between cars ECU at any time during any event. ECUs may be sealed at any time and where sealed may be checked at any time from sealing until the end of the season. For the avoidance of doubt sealing will not be limited to 30 days.

2021 The Quaife MINI CHALLENGE Sporting & Technical Regulations

h) There can be no recourse upon the Championship Organisers, Eligibility Scrutineer, Technical officers or Motorsport UK should any ECU, electronic controller or similar unit or system become inoperative or defective during calibration, checking or inspection.

i) The championship Eligibility Scrutineer may fit seals to the ECU/Mounting and or Connector and where sealed the mounting/connector may be checked at any time from sealing until the end of the season. For the avoidance of doubt sealing will not be limited to 30 days.

- 5.9.4 Sensors must be fitted as per manufacturers specification, functioning and standard, wiring looms must remain unmodified.
- 5.9.5 Exhaust System - Exhaust system championship part number MCF56030 is mandatory
- 5.9.6 A fuel sample drain valve must be fitted
- 5.9.7 The use of fuel cooling apparatus of any kind is forbidden.
- 5.9.8 Spark Plugs BMW part number 12120046646 or 12122455258 are mandatory, however, the championship may substitute another specification of plug at any time.
- 5.9.9 Engine Mounts
Engine mount championship part number MCF56031 is mandatory
Gearbox mount championship part number MCF56032 is mandatory
- 5.9.10 Flat Shift Load Cell championship part number MCF56033 is mandatory
- 5.9.11 Engine testing – At any time Competitors may be required to make their engines and ancillaries available for testing/inspection, at the Competitor's expense.
- 5.9.12 Use of Engine Oil championship part number MCF56071 is mandatory
- 5.9.13 NO OTHER MODIFICATIONS OR CHANGES TO STANDARD BMW PARTS AS SPECIFIED ON A MINI COOPER S F56 BUILD DATE 2014-2021 ARE ALLOWED.

5.10 SUSPENSION

- 5.10.1 a) It is mandatory to use Nitron suspension / spring kit championship part number MCF56034.
- b) Standard rate springs championship part number MCF56087 (685lbs/inch fronts and 1000lb/inch rear) or optional softer springs championship part number MCF56088 (571lbs/inch front and 800lb/inch rear) may be used. Rear springs must be used on the rear axle and the front springs must be used front axle. On each the same rate spring must be used on left and right side.
- c) It is permitted to use Nitron spring spacer championship part number MCF56089
- d) Servicing and repairs of Dampers may only be carried out by Total Track Ltd or it's nominated agent.
- e) Competitors are required to complete the JCW Log Book (Appendix B) to confirm damper eligibility before competing in the MINI CHALLENGE. The form must also be completed again if required by the Championship eligibility scrutineer.
- 5.10.2 It is mandatory to use Powerflex Suspension fixed camber Bush Kit championship part number MCF56035.2. Use of the version MCF56035.1 adjustable lower arm bush is not allowed. It is permitted and recommended to use adhesive to glue bushes in place.

2021 The Quaife MINI CHALLENGE Sporting & Technical Regulations

- 5.10.3 Rear camber adjustment only by use of standard parts and/or mandatory Adjustable lower control arms Championship Part Number MCF56077
- 5.10.4 Torsion bars must be connected at all times and It is mandatory to use the following part numbers:
 - Front - BMW 31306859880
 - Rear - BMW 33506853918
- 5.10.5 It is permitted to use uprated rear trailing arm championship part number MCF56092 with reinforced damper mount, and ABS bracket removed and it permitted to use slotted trailing arm mount championship part number MCF56096
- 5.10.6 It is permitted to use uprated Powerflex Front Anti-Roll bar bush kit championship part number MCF56035ARBF and Powerflex Rear Anti-Roll bar bush kit MCF56035ARBR
- 5.10.6 It is permitted to use uprated Nitron Front Drop Link kit championship part number MCF56034D
- 5.10.7 The championship eligibility scrutineer may, at any time during a race meeting, require dampers to be dyno tested by the championship damper supplier. The test results will be compared against a reference damper supplied by the manufacturer and tested on the same damper dyno, on the same day to determine whether there is any difference in performance. Whether a difference is found or otherwise, the scrutineer may request that the damper manufacturer strips a damper under parc ferme conditions to compare the internal build of the damper to compare with the reference damper or may require the dampers to be sent away for inspection at an approved location.

5.11 TRANSMISSION

- 5.11.1 Quaife Gearbox/Differential/Gear Linkage and Lever Assembly, championship part number MCF56036 is mandatory
- 5.11.2 Gearbox Oil championship part number MCF56057 is mandatory
- 5.11.3 The use of clutch assembly championship part number MCF56037.2 or part number MCF56037.1 with Conversion Kit MCF56037.1C are mandatory.
- 5.11.4. The use of flywheel championship part number MCF56038.1 or MCF56038.2 is mandatory. If Clutch MCF56037.1 with Conversion Kit MCF56037.1C is used flywheel MCF56038.1 must be used, if clutch MCF56037.2 is used flywheel MCF56038.2 must be used. For the avoidance of doubt, no material may be removed from the flywheel.
- 5.11.5 The use of Near Side (Left/passenger side) Driveshaft championship part number MCF56039 (Long) or MCF56039S (Short) or MCF56039U (Short and Uprated) or MCF56039GD (Short and Gun Drilled) is mandatory. These parts may only be used on the Near Side (Left/passenger side) of the car.
- 5.11.6 The use of Off Side (Right/Driver side) Driveshaft Assembly championship part number MCF56040 (Long) or MCF56040S (Short) or MCF56040U (Short and uprated) or MCF56040GD (Short and Gun Drilled) is mandatory. These parts may only be used on the Off Side (Right/Driver side) of the car.
- 5.11.7 The use of M10 washers/shims to space the intermediate driveshaft bearing housing away from the engine, to ensure correct alignment of the differential output with the bearing housing is allowed.

2021 The Quaife MINI CHALLENGE Sporting & Technical Regulations

- 5.11.8 The use of wheel stud & nut kit championship part number MCF56041 is mandatory
- 5.11.9 Gearbox maintenance may be undertaken by entrants or their nominated agent, using parts purchased from Total Track or it's nominated agent. Only the parts and gear ratios supplied in gearbox championship part number MCF56036 may be used to undertake maintenance. Parts must be purchased from Total Track. Comparison of parts used will be regularly undertaken to ensure conformity and Motorsport UK seals may be used to seal gearboxes prior to inspection away from events. Where sealed Gearboxes may be checked at any time from sealing until the end of the season. For the avoidance of doubt sealing will not be limited to 30 days.
- 5.11.10 Alternative gear ratios may be specified by the Championship Organisers at any time to meet circuit specific requirements. Alternative ratios must be purchased from Total Track and may only be used when written authorisation is issued via a Championship bulletin.
- 5.11.11 Differential maintenance may be undertaken by entrants or their nominated agent, using parts purchased from Total Track or its nominated agent. Only the part numbers supplied in gearbox championship part number MCF56036 may be used to undertake maintenance. Parts must be purchased from Total Track. Comparison of parts used will be regularly undertaken to ensure conformity and Motorsport UK seals may be used to seal diff housings prior to inspection by Quaife away from events. For the avoidance of doubt, only the ramp angle used in part number MC56036 may be used, alternative ramp angles/ramps are not allowed. Diff parts may not be modified in any way and must be used as supplied from Total Track. Ramps may not be fitted in a different position or orientation than as supplied in Part MC56036. Preload is free using parts supplied by Total Track and parts must not be modified in any way in order to adjust pre-load. All bolts used must be as supplied by the manufacturer unless otherwise stated below. Gearboxes may be sealed at any time and where sealed may be checked at any time from sealing until the end of the season. For the avoidance of doubt sealing will not be limited to 30 days.
- 5.11.12 Competitors are required to complete the JCW Log Book (Appendix B) to confirm eligibility of the gearbox and differential before competing in the MINI CHALLENGE. The section must also be completed again if required by the Championship eligibility scrutineer.
- 5.11.13 Uprated Crown Wheel Bolts championship part number MCF56036CB may be used

5.12 ELECTRICS

- 5.12.1 Generators: the standard system must be fitted and working at all times. The correct belt length must be used and no lubricants or friction reducers can be added to the belt. Audible belt slip will be deemed as a non-standard system.
- 5.12.2 Any logged data must be made available to the Eligibility Scrutineer/Championship Coordinator if requested.
- 5.12.3 Dry cell battery championship part number MCF56042 is mandatory
- 5.12.4 Isolator championship part number MCF56043 is mandatory and must be fitted and working at all times
- 5.12.5 Screen washer system championship part number MCF56052 must be fitted and operational at all times. Sponge may be added to the washer tank. Washer nozzles must not be taped.
- 5.12.6 The use of an electric screen blower wired into the switch control panel is optional.

2021 The Quaife MINI CHALLENGE Sporting & Technical Regulations

5.13 BRAKES

- 5.13.1 Braided Brake Hose Kit championship part number MCF56044 is mandatory.
- 5.13.2 Use of Brake Fluid championship part number MCF56058 is mandatory and sponge may be added to the reservoirs.
- 5.13.3 The use of Front Brake caliper and rotor kit championship part number MCF56045 is mandatory.
- 5.13.4 The use of pedal box, bias cable and line lock kit championship part number MCF56046 is mandatory. Alternative size Alcon Master Cylinders may be used on brakes and alternative Alcon or OBP cylinders may be used on the clutch.
- The use of updated concave throttle stop championship part number MCF56094 is mandatory
- It is permitted to fit a heel rest to the foot plate.
- 5.13.5 The use of front pad championship part number MCF56047 is mandatory.
- 5.13.6 The use of rear pad championship part number MCF56048 is mandatory.
- 5.13.7 The use of Brake Pressure sensor championship part number MCF56055 is mandatory.
- 5.13.8 The use of handbrake kit championship part number MCF56090 is optional.

5.14 WHEELS

- 5.14.1 17" rims championship part number MCF56049 are mandatory.

5.15 TYRES

- 5.15.1 **The MINI CHALLENGE** will run control tyres

JCW SLICK – Goodyear/Dunlop 235/610R17 GY SLICK TC 01B3

JCW WET – Goodyear/Dunlop 235/610R17 GY CR9000 TC 01W3

- a) Other compounds, makes and sizes may be approved for specific circuits, conditions or due to supply issues. Ground clearance limits may also change to facilitate different specification tyres.
- b) The Competitor has the choice at all times whether to run both axels with the same specification or one axel with the wet specification and one axel with the slick specification
- c) Re-cutting, re-grooving or in any other way modifying the tread pattern is not permitted.
- d) All the manufacturers' data must be clearly visible. Buffing of sidewalls to remove data is strictly prohibited.
- e) The use of tyre heating/heat retention devices is prohibited.
- f) The use of tyre modifying treatments, compounds, and inflation with nitrogen or similar gases are all prohibited and must not be taken to race events in support vehicles, garages or awnings.

2021 The Quaife MINI CHALLENGE Sporting & Technical Regulations

g) All tyres must be fitted in accordance to the manufacturers specification. If Goodyear specify a minimum pressure this will be communicated via a Championship Bulletin and where a Bulletin is issued, Competitors must ensure their tyres remain above the minimum pressures as advised by Goodyear at all times from the Assembly area to the end of Parc Ferme. Where necessary tyre pressures will be tested by Goodyear in assembly or in Parc Ferme entirely at their discretion and Goodyear will be the judge of fact.

h) Tyre scraping may not be carried out within 30 minutes of the start of a session.

5.15.2 Tyre usage.

5.15.2.1 Race Weekends Including Pre-Race Meeting Test Days

a) At the first race meeting a Competitor attends a maximum of 10 new or used dry tyres can be nominated. All tyres must be declared on a tyre form before they are used.

A Competitor may only use tyres he/she has personally nominated, irrespective of whether they use their own car or any other entrants car at any time on the pre-race meeting test day or the race meeting. The only exception is for Competitors joining after the first race meeting of the season who may at their first meeting nominate used tyres that have previously been nominated by a different Competitor.

b) At each 3 race meeting thereafter Competitors may nominate a further 6 new dry tyres or at each 2 race meeting Competitors may nominate 4 new dry tyres plus a maximum of 10 tyres used at the previous race meeting. All tyres must be declared on a tyre form before they are used.

c) Only in exceptional cases where, in the judgement of the Championship Eligibility Scrutineer, damage to the available nominated tyres makes further participation in an race meeting impossible, another 'used' tyre that has not previously been nominated may be substituted. The substitution may only be authorised by the Championship Eligibility Scrutineer. The selection is to be entirely at the discretion of the Championship Eligibility Scrutineer with guidance from the Championship technical adviser or Goodyear.

d) A race meeting will be deemed to start at the start of the pre-race meeting test day and finish when the results of the last race have been declared.

e) There is no restriction on the number of wet tyres used.

f) The Competitor must submit, to the Eligibility Scrutineer or his appointed deputy, a completed tyre nomination form before the first pre-race meeting test session declaring any tyres to be used in that session. Further tyres may then be declared thereafter up to the limits set earlier in these regulations. Alternatively, where available electronic records may, at the discretion of the championship organisers be substituted. Should Electronic records be chosen as the preferred means of recording tyres, Competitors will be notified in advance.

g) It is the driver's/entrants responsibility to ensure the correct numbers are recorded and he/she signs the tyre form.

h) Turning of tyre's will only be done with the agreement of Goodyear and the eligibility scrutineer

i) Only dry/slick tyres nominated for the event are allowed in the pit lane. If tyres which have not been nominated are found to be in the pit lane, the Competitor will be deemed to be in breach of these regulations and referred to the Clerk of the Course. If it is not

2021 The Quaife MINI CHALLENGE Sporting & Technical Regulations

possible to identify the owner of a tyre that has not been nominated it will be confiscated with the wheel to which it is fitted.

- 5.15.3 Each axle must be fitted with the same specification of tyre across the axle. It is the sole responsibility of the Competitor to judge whether the track is wet enough to use treaded tyres on one or both axles
- 5.15.4 The championship organisers may increase the number of new tyres allowed per event at any time and entirely at their discretion.
- 5.15.5 The championship organisers may change the make, compound or specification of tyre at any time and entirely at their discretion.
- 5.15.6 There are no restrictions on use of tyres at the Goodyear Tyre test day or any media day.

5.16 WEIGHTS

- 5.16.1 Minimum weight for car including Driver and equipment:
1170kg
- 5.16.2 Where required, ballast weights championship part number MCF56050 must be fitted in the specified position in the front passenger seat rails and be securely fixed, with reference to Motorsport UK regulation J5.15. It is permissible to remove the spacer lugs from the ballast plates if more than 3 ballast plates are required. No other ballast plates are allowed.
- 5.16.3 The Organisers will nominate the scales to be used at each venue; these shall be the Scales of Fact. Competitors will be given access to these scales prior to qualifying. It is the Competitors responsibility to confirm the scales position and availability with the Championship Eligibility Scrutineer.
- 5.16.4 Vehicles may be checked at any time during the event.

5.17 FUEL TANK/FUEL

- 5.17.1 **Control fuel**
The use of control fuel is mandatory in the JCW class. Fuel testing can be carried out throughout the season. At the Organisers discretion an alternative supplier may be nominated. At the organisers discretion a different specification of fuel may be nominated.
- 5.17.2 Pursuant to Motorsport UK Regulation J5.13.4, the control fuel will comply with 2021 FIA Appendix J – Article 252 – Article 9 as supplied by the nominated fuel supplier
- 5.17.3 At the end of qualifying and each race at least 3 litres of fuel from the tank of the competing car must be available to the scrutineers for analysis. Compliance with minimum weight specified for the car will be taken before the fuel is removed.

5.18 SILENCING

All vehicles must be silenced to current Motorsport UK Regulations and circuit supplementary regulations using Exhaust system championship part number MCF56030

5.19 NUMBERS & CHAMPIONSHIP IDENTIFICATION

2021 The Quaife MINI CHALLENGE Sporting & Technical Regulations

5.19.1 Both car and Driver must meet the following requirements of livery during all practice, qualifying and events in The MINI CHALLENGE.

5.19.2 a) Championship Sponsors' decals must be carried on all cars. The Championship decals that may be required to be carried are:

front and rear windscreen headers
two side door panels
side & front roof headers
top of front wings/bonnet sides
centre of bonnet
front and rear number plates
both lower doors and door sills
front & rear bumpers
BARC decals on rear side windows

A decal plan will be issued to entrants before the first event and decals must be positioned as per the decal plan. Variations to the decal plan during the season will be communicated via bulletins.

b) Advertising may be carried on the rear quarter Windows, but must allow the correct fitting of driver name and number. The size of these decals must be the same size as those supplied as part of the Championship decal pack at the start of the season.

c) If the reserved sponsor decals areas are not in use by the Championship Competitors may use the area for their own decals, but must make the reserved areas available to the championship if requested to do so and should take this into account in their decal design.

d) JCW Sill Badges, JCW A Panel Stickers and JCW Boot Sticker must be fitted at all times. The JCW badges/stickers must be fitted within 10mm in any direction of the original (OE) F56 3 Door Hatch JCW position.

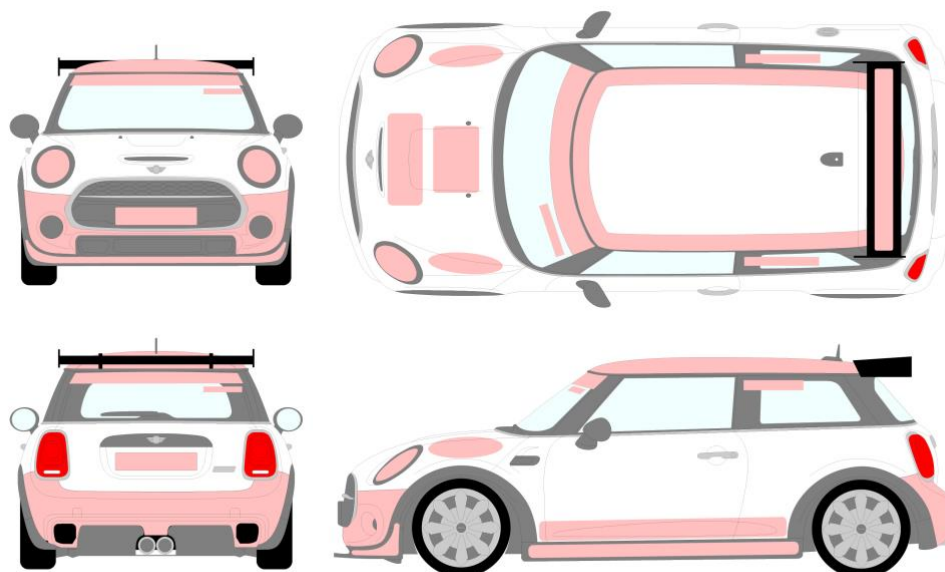
Q11.4.1. The numbers for each rear side window, which shall be;

- (i) a minimum of 200mm high
- (ii) with a stroke width of at least 20mm
- (iii) coloured reflective yellow.

Q11.4.2. In addition, the windscreen of all cars must display the competition number positioned on the upper area of the passenger's side of the windscreen, as follows;

- (i) the numerals must be at least 150mm high
- (ii) be in the same colour and font as those displayed on the rear side windows
- (iii) be placed no closer than 50mm from the lower edge of the windscreen "sun-strip" and 50mm from the side edge of the windscreen

2021 The Quaife MINI CHALLENGE Sporting & Technical Regulations



- 5.19.4 Hatched areas are reserved for championship sponsors/championship sponsors' decals. Specific locations on the vehicle are reserved for CHALLENGE sponsors - see diagrams above. The specific position of decals will be advised in writing by the championship decal supplier on a championship decal plan when decals are supplied. These positions must be adhered to and are to be treated as part of these regulations. In addition to the hatched areas the rear wing top surface will be reserved for championship sponsors.
- 5.19.5 To ensure conformity only Competition Numbers purchased from the MINI CHALLENGE or nominated supplier will be acceptable.
- 5.19.6 Competition numbers must be obliterated or removed when the competition car is driven on the public road. This is an Motorsport UK Regulation; non-compliance will be reported to the Championship Stewards for further action.
- 5.19.7 Drivers' Names

Drivers name as used on the Championship Registration form must be shown in white, on rear quarter glass, rear screen, dash board & front window all as supplied and unaltered. Drivers/Entrants may request authorization from the Championship Director to use a nick name. If authorization is granted it must be in writing.

Competitors will be provided with a set of Drivers' Name decals at the start of the season, these must be applied to the rear side windows, rear window, dash board and front window in positions to be advised in decal pack. No other dash board decals / logos are permitted to be in view of the championship on board cameras without prior authorization in writing from the championship organisers

If a Competitor needs to replace these, they must be produced, by the Competitor, to the same style and size and colour as the championship items or they can be ordered from the nominated supplier at the drivers cost.

- 5.19.8 The current MINI CHALLENGE points leader after each event may be required to carry an identifying – yellow – front windscreen header, which if required will be provided.

2021 The Quaife MINI CHALLENGE Sporting & Technical Regulations

- 5.19.9 If required, drivers race overalls (see SR.8.3.2.) must display championship and sponsor badges in positions to be defined. If a driver uses overalls displaying a sponsor that conflicts with a MINI CHALLENGE sponsor or supplier the Championship Coordinator may at his/her absolute discretion require that the conflicting sponsors logos are removed or covered up. Reference to other marques of car are not allowed and must be removed or covered.
- 5.19.10 One set of Championship decals will be issued FOC and prior to the first event of the season to each Competitor entered for the season and paying the full season entry fee. Replacement decals can be purchased directly from the nominated supplier.
- 5.19.11 Drivers and teams may be required to display championship and championship sponsor, flags, banners and other signage within the paddock. Details will be issued via a Championship Bulletin.
- 5.19.12 The Organisers reserve the right to sanction an individual livery/championship decal plan for a competing car.

5.20 DATA LOGGING

- a) A Cosworth dash/data logger championship part number MCF56051 must be fitted and working at all times.
- b) It is permitted to reposition the dash display so as to allow the driver to see the dash from their normal seating position.
- c) Additional sensors may be required by the Championship Organisers to be fitted at any time.
- d) Data must be made available to the Eligibility Scrutineer and Technical Officers upon request at any time during an event.
- e) Competitors are reminded that in car footage must not be used in such a way as to risk bringing the MINI CHALLENGE or the sport into disrepute.
- f) Competitors must not apply tokens to the data logger that restrict access by the Championship or its Eligibility Scrutineer and Technical Officers.
- g) Competitors may personalize their Cosworth data logger page set up and fit additional buttons to control features of the data logger
- h) An additional data logger may be fitted, no additional sensors or displays may be fitted to support this, except on test days.

5.21 Transponders

Transponders must only be fitted in the designated position on the NS front chassis leg and must be working.

2021 The Quaife MINI CHALLENGE Sporting & Technical Regulations

6. COMMERCIAL

6.1 COMMERCIAL UNDERTAKINGS

- 6.1.1 The following Commercial Regulations are contractual between the Entrant and / or Teams and / or Driver and the Organisers and / or Promoters and are not considered by Motorsport UK. Accordingly the application of these Commercial Regulations by the Organisers and / or Promoters will not be subject to the Judicial processes of either the Championship Stewards and / or the Motorsport UK / MSC. However these Commercial Regulations are in the nature of a continuing binding contractual warranty and Regulations given by and on behalf of all Entrants Teams and Competitors in the Championship to the Organisers by the action of applying for and during any current period of Registration and accordingly they are enforceable as such.
- 6.1.2 All Entrants Teams and Competitors acknowledge warrant and undertake with the Organisers that any Championship Registration under these Championship Regulations may be suspended withdrawn or revoked by the Organisers for any breach of these Championship Regulations including but not exclusively these Commercial Regulations. Such suspension withdrawal or revocation of Registration except as provided herein shall not serve in the nature of any liquidated damages or penalty for breach of the contract that is represented by the Championship Regulations and the Organisers are at liberty to seek such remedy and in such forum as they may in their absolute discretion deem appropriate.

6.2 COMMERCIAL REGULATIONS

- 6.2.1 The Race Meetings comprising the Championship shall be conducted in accordance with the Regulations, the BARC Standing Regulations, the BARC Health and Safety and these Commercial Regulations.
- 6.2.2 In these Commercial Regulations the nomenclature definitions and abbreviations specified in the General Regulations of the Motorsport UK from time to time and in the Sporting Regulations of these Championship Regulations shall be adopted.
- 6.2.3 The Organisers acting through the Championship Director Championship Coordinator have the right to amend vary or add to the Commercial Regulations from time to time. Such amendments variations and additions shall be notified by bulletin to all Championship Registrants by posting to the address detailed on the Championship Registration Form or sending to the e-mail address detailed on the Championship Registration Form or faxing to the fax number detailed on the Championship Registration Form or delivery to the Competitor by hand.
- 6.2.4 All Competitors Entrants Teams and persons associated with them for the purposes of the Championship agree to be bound by the Commercial Regulations and any additions variations or amendments thereto and Competitors Entrants Teams shall procure compliance by persons associated with them.
- 6.2.5 Any prizes will only be issued to Competitors whose accounts with Total Track Ltd are up to date as at close of business on 31 October following the race season or the end of the race season if later. Any Competitor whose accounts are not up to date as at close of business on 31 October following the race season relinquishes all rights to any prizes.
- 6.2.6 Enquiries concerning the commercial aspects of the championship must be addressed to the Championship Director in writing.

2021 The Quaife MINI CHALLENGE Sporting & Technical Regulations

- 6.2.6 The championship title (MINI CHALLENGE) and associated logo styles may only be used with the prior written approval of the Total Track Ltd.
- 6.2.7 These regulations must not be copied in all or part and are Copyright Total Track 2021.
- 6.2.8 Competitors are advised that, unless requested otherwise, their information will be stored in a computer retrieval system and may be used for publicity and regulatory purposes.
- 6.2.9 Entry into the championship is conditional upon each Competitor:
- i) Providing free of charge to the Championship Organisers advertising places on their cars and clothing as specified.
 - ii) Accepting without reservation or recourse the surrender of his/her rights (if any) for TV filming and broadcast of footage collated during the series which may be used at the MINI CHALLENGE Organisers', Sponsors' and Promoters' discretion.
 - iii) Complying with the Championship Organisers and Sponsors requirements on podium procedures, including a requirement to wear MINI CHALLENGE Sponsors publicity material in preference to the Competitors own sponsor.
 - iv) Co-operating with requests for publicity sessions throughout the season.
- 6.2.10 If an entrant or Competitor owes money to either the Championship or a team the Championship Director may, at his absolute discretion, refuse to allow an entrant to take part in any event/race meeting until the outstanding balance is cleared.

6.3 PENALTIES

- 6.3.1 **WARNING:** The terms of the Commercial Regulations are fundamental to the contract between TOCA (where applicable) the Organisers and the Registrants respectively. All Entrants Teams and Competitors acknowledge warrant and undertake with the Organisers that any breach of these Championship Regulations including any breach of any of the Commercial Regulations may render the Registrants and any of them ineligible for competition and in such circumstances continued participation in the Championship will be entirely at the discretion of the Organisers who may revoke suspend or withdraw any Registrant. The Organisers as an alternative and/or in addition to revoking suspending or withdrawing the Registration of the Competitor and / or Entrant and / or the Team for participation in the Championship may but subject to their absolute discretion refer the matter to the Championship Stewards in order that if those Stewards see fit they may impose any one or more of the following penalties as a condition of continued participation in the Championship but in respect of such matter there shall be no contractual right of appeal:

Reprimand which may include forfeiture of a qualifying time or times

Time penalty

Exclusion

Forfeiture of Championship points (even if this results in a minus total of points)

In addition or in lieu of any such penalty the Organisers acting through the Championship Director or Coordinator may require the Competitor and/or team to take such steps as may be reasonable to mitigate the damage to the reputation of the Championship and / or the Organisers or any of them.

2021 The Quaife MINI CHALLENGE Sporting & Technical Regulations

- 6.3.2 In the case of an alleged breach of any Commercial Regulation the decision of the Organisers is final as to the culpability and penalty (and for the avoidance of doubt there is no appeal to the Motorsport UK MSC National Court).
- 6.3.3 A breach of any of the Commercial Regulations may additionally or alternatively result in a fine as contractual liquidated damages up to a maximum of £1000 for each offence being imposed by the Organisers acting through the Championship Director or Coordinator. All such liquidated damages must and shall be paid forthwith as a debt to Total Track Ltd and The Championship. Registration will be suspended until such payment has been received.
- 6.3.4 Where in the opinion of the Organisers any Competitor(s) and / or Entrant and / or Team has gained an unfair advantage (whether inadvertently or not) from a breach of the Commercial Regulations by its own actions or those of another Competitor or Team the Organisers acting through the Championship Director or Coordinator may impose any one or more of the penalties set out in Commercial Undertaking 6.3.1 above in order to remove or otherwise compensate for such advantage.

6.4 TESTING & OTHER RACING

- 6.4.1 Unless permitted by the Championship Director, testing & racing for MINI CHALLENGE Competitors is strictly controlled by the following restrictions:
- 6.4.2 Testing or racing after the last race of the 2020 Championship is unrestricted until the 09/04/21.
- 6.4.3 It is permitted for each Competitor entered in the 2021 Championship to purchase or use no more than one set (i.e. 4) of new tyres at each permitted test day or additional test day (other than a race weekend test day) during the course of the 2021 Championship. The only other eligible tyres for use on official test days or Additional Test Days will be previously nominated tyres.
- 6.4.4 With the express prior permission of the Championship Director Competitors may be granted permission to test prior to the race meeting for the purpose of corporate/sponsorship activity. This will be exclusively on the basis that the test takes place on a trackday only. Any breach of these obligations will result in immediate suspension of all relevant Championship Registrations and/or the penalties below being applied.
- 6.4.5 The Organisers reserve the right to attend all such tests.
- 6.4.6 Breach of the testing regulations will result in the following penalties being applied to the Competitor:

The driver will not take part in a pre-race meeting official test day. The penalty must be taken at the earliest opportunity being the next pre-race meeting official test day or if this is already being missed due to a penalty the next test that the driver would otherwise attend. If this is not possible (for example if there is no pre-race meeting official test day) the penalty will be that the driver will be put to the back of the grid at the next race meeting. If this is not possible the Clerk of the Course may apply any other penalty he deems appropriate.

Drivers will have two new tyres removed from their tyre allocation at the next pre-race meeting test day.

- 6.4.8 Competitors are not allowed to race a JCW Class race car in any other race Championship/Series or Event from the 21/03/20 until the end of the season, other than with the express permission of the Championship Director.

2021 The Quaife MINI CHALLENGE Sporting & Technical Regulations

6.5 TELEVISION

- 6.5.1 By entering the MINI CHALLENGE Championship Competitors entrants and teams are obliged to assist TOCA and the Organisers in the promotion of the Championship and in particular the television coverage:
- 6.5.2 All Competitors entrants and teams are obliged to assist the TOCA nominated TV Production Company and / or any other nominated Championship TV production company in the filming of Championship events and related activities through the granting of interviews when requested and any other reasonable requests of the TV Production Company or the Organisers.
- 6.5.3 Drivers finishing first second and third in the Drivers' Championship must make themselves available immediately after each Qualifying session Race and/or the prize giving ceremony for any media interviews in accordance with the requirements and directions of the Organisers.
- 6.5.4 All cars must carry an in-car camera or on-board camera during testing free practice official qualifying sessions and/or the races at the request of the TV Production Company
- 6.5.5 Footage from any camera used by Competitors or teams cannot be used for commercial exploitation or public broadcast. Any footage produced in breach of this Regulation will forthwith upon request be delivered up to the Organisers in addition to any penalty imposed.
- 6.5.6 Any Competitor and/or anyone connected with a Competitor is prohibited from trying to influence the editorial decisions of the TV Production Company in connection with the Championship as it is shown on television or of otherwise interfering with television coverage.
- 6.5.7 The decision as to which car is to carry an on-board camera and/or an in-car camera rests solely with the TV Production Company TOCA and Total Track Ltd whose decision shall be final.
- 6.5.8 It is permitted to install own brackets in a competing car in order to incorporate an in-car camera but always subject to the prior approval of the Licenced Eligibility Scrutineer and the nominated TV Production Company.
- 6.5.9 The TOCA nominated TV Production Company shall have unrestricted access to any video footage captured by the drivers and / or teams or their associates and may incorporate any such material in its coverage of the Championship.
- 6.5.10 All footage obtained or recorded by the TOCA Nominated TV Production Company of the Championship belongs to TOCA and/or the TOCA nominated TV Production Company and all Competitors entrants and teams and their associates consent to their images being used by TOCA (and those authorised by it) for promoting the Championship and merchandise associated with the Championship.
- 6.5.11 The **MINI CHALLENGE/Total Track Ltd** has exclusive broadcast, cable, satellite, video, internet, social media and mobile phone rights and rights to all other mediums to film and record the participation of the Driver, Competitor, Entrant, Sponsor, and any other team members in the events and activities throughout the championship and to license, assign or otherwise deal with such rights and/or film and recording and distribution.
- 6.5.12 Any Competitor advised by the Championship Organisers that they are to carry on-board television cameras, must have the approved championship logos on the dashboard,

2021 The Quaife MINI CHALLENGE Sporting & Technical Regulations

visible to the official on-board camera. The decision for the positioning of these Logos rests solely with the Championship Organisers and Promoters.

No other publicity material visible to an onboard camera will be allowed.

6.6 ADVERTISING

- 6.6.1 No advertising of tobacco or tobacco products is permitted in any shape or form in this Championship. Additionally any products that are not permitted to be advertised on UK television are also prohibited. The Organisers reserve the right to censor any advertising that may at the absolute discretion of the Championship Director or Coordinator and / or the Organisers be deemed to be unsuitable. Any car or driver considered by the Championship Director or Coordinator and / or the Organisers in their absolute discretion to be exhibiting unsuitable advertising may be excluded from any Round of the Championship.
- 6.6.2 All cars must carry the MINI CHALLENGE Sponsors' decals and panels in the correct locations, without alteration and without interference.
- 6.6.3 If required, drivers race overalls (see SR.5.3.2.) must display championship and sponsor badges in positions to be defined. If a driver uses overalls displaying a sponsor that conflicts with a MINI CHALLENGE sponsor or supplier the Championship Director or Coordinator may at his/her absolute discretion require that the conflicting sponsors logos are removed,
- 6.6.4 At the start of each event & qualifying, the cars must be clean and in good order, with all Championship decals in place and in good order.
- 6.6.5 A complete set of championship decals will be issued free of charge to each Competitor at the beginning of the season. Any subsequent decals required can be purchased through the MINI CHALLENGE or their nominated supplier. The Championship Organisers reserve the right to either apply a penalty or may be exclude a Driver from any Round of the Championship.
- 6.6.6 No advertising or statement on the car or on Drivers' race clothing is allowed which may be considered offensive or inflammatory to the Championship Organisers, the Promoters or their Sponsors and individual Event Organisers.
- 6.6.7 No car manufacturer logos may be displayed on race cars, race support vehicles, awnings or race suits other than the MINI Logo. The only exception is for race support vehicles original badges.
- 6.6.8 All Drivers required for Podium Presentations at each meeting, must attend, without delay. Failure to do so may mean forfeiture of any championship awards/points at that round. Drivers required for podium presentations are required to remove any signage, decals, badges and hats that are not relevant to, or conflict with, the MINI CHALLENGE.
- 6.6.9 All Competitors undertake not to publish negative or derogatory comments (whether true or false) about the Total Track, The MINI CHALLENGE, any MINI CHALLENGE staff, suppliers or partners including but not limited to MINI, on any website, internet site or system, social media site or any publication or any broadcast media. Any breach of this undertaking will be treated as a breach of these regulations and will be reported to the Championship Stewards to investigate and take action where necessary.

6.7 PUBLICITY

2021 The Quaife MINI CHALLENGE Sporting & Technical Regulations

- 6.7.1 At all Championship Meetings Drivers wearing their driving overalls must take part in any autograph session paddock walkabout and pre-race parade when requested.
- 6.7.2 All drivers who qualify for an award shall attend the podium ceremony and any post-race televised interviews wearing their race winners caps to be provided by Total Track Ltd. Failure to attend the podium ceremony or failure to attend correctly attired may result in a fine being imposed by the Championship.
- 6.7.3 In signing the Championship Registration Form Competitors Entrants and Teams agree that TOCA (and those authorised by it) and the Organisers may make use of his/her/its activities and successes in motor sport for any advertising publicity public relations and merchandising purposes. The Competitors Entrants and Teams also agree that in any advertising or promotion with which he/she/it is associated (relating to the Championship) the full title of the Championship (including the Championship sponsors name) will be used at all times.

6.8 MERCHANDISING

- 6.8.1 The Competitor Entrant and Team hereby authorise TOCA and the Organisers to use and reuse and sublicense the use of images and representations of the vehicles competing in the Championship and the name images and representations of the driver the Team the Team logo and Team paraphernalia including (insofar as the same appear on the clothing worn by the Competitor or on Team paraphernalia or on the cars driven by the Competitor in the Championship) the logo and decals of all sponsors of the Competitor and/or Entrant and / or Team for the purposes of producing merchandise exploiting the reputation of the Championship and all elements of the Championship.
- 6.8.2 The Competitor Entrant and Team authorise TOCA and the Organisers to use and licence others to use all Championship images and other material relating to the Championship in marketing and packaging material and commercial advertisements exploiting the Championship or merchandise of the Championship or any individual elements of the Championship.
- 6.8.3 The Competitor Entrant and Team shall assist the Organisers and TOCA and those authorised by it with the promotion of the Championship and production and promotion of merchandise associated with the Championship.

6.9 MEETING ARRANGEMENTS

- 6.9.1 Throughout the course of the Championship the Championship Director or Coordinator on behalf of the Organisers may inspect all race transporters and motorhomes to ensure that they are of smart appearance and in good order. The Championship Director or Coordinator may refuse to issue a Paddock vehicle pass to any vehicle that is deemed by the Organisers to be unsuitable for display within the Paddock.
- 6.9.2 At the start of each Meeting practice session and race the competing cars and all Team vehicles must be clean of smart appearance and in good order. The Championship Director or Coordinator and Organisers reserve the right to suspend Competitors not meeting this requirement from taking further part in the Championship and withdraw passes until this Regulation is fulfilled to their satisfaction.
- 6.9.3 Any team considered by the Organisers in their absolute discretion to be exhibiting unsuitable advertising may be asked to and shall thereby withdraw it immediately.
- 6.9.4 Any pipes wires or cables trailing from motorhomes and/or transporters and/or generators must be protected by hard covers where they will be crossed by vehicles or pedestrians. All health and safety requirements must be met at all times and warning signs must be erected where there is any danger to the public or other persons.

2021 The Quaife MINI CHALLENGE Sporting & Technical Regulations

6.10 PASSES

6.10.1 Permanent passes will be issued to each registered MINI CHALLENGE Competitor for his/her sole use and these will be valid for every round of the Championship. Each Competitor shall be given the following number of passes:

- 6 x Pit Lane Access Passes
- 6 x VIP passes
- 2 x Private car passes
- 1 x Transporter Pass

Sufficient Pit Lane passes must be given to team members as team members must be ready to present their pass if in the assembly area, the pitlane or Parc fermé. Passes will be randomly inspected. The support vehicle pass must be displayed in the support vehicle when in the paddock. Please note that Pit Lane passes are for your support team not for family and friends, if team members do not have passes they may be refused entry to the assembly area and/or pit lane. To facilitate this the Championship coordinator will retain 3 pit lane access passes per entrant to distribute to the entrants team. Any breach of this regulation will be reported to the CoC.

6.10.2 TOCA passes will be issued to each registered Entrant/Driver for his/her sole use and these will be valid for every round of the Championship.

6.10.3 TOCA passes are issued on condition that the person or organisation to whom they are issued waives any and all claims it may have now or in the future and releases from all liabilities and agrees not to take any legal action and to always hold harmless BARC (TOCA) Ltd and their employees agents and representatives and servants the Motorsport UK the Race Organisers the Promoters the Venue Owner the Championship Coordinator any participating team and all employees agents servants and contractors thereof for any personal injury death damage or loss of any kind that the pass holder may sustain as a result of or in connection with the pass holder's presence within the venue. This indemnity does not apply insofar as injury or death is caused as a result of the negligence of the party seeking an indemnity.

6.10.4 Entrants/Drivers will be required to sign for receipt of their TOCA passes. By accepting the issue of these passes the Entrant/Driver is deemed to agree to abide by the pass conditions and to undertake the obligation to advise each person to whom they are issued of the pass conditions and to ensure the observance thereof.

6.10.5 TOCA passes are issued subject to the following conditions:

(i) A TOCA pass may only be used to gain access to the areas indicated on the face of the pass. Any person found within a restricted area without the appropriate pass may be removed from the venue immediately and/or have any pass held by them withdrawn.

(ii) A TOCA pass may only be used by the Entrant/Driver to whom it is specifically issued. It is forbidden to alter or deface passes in any way or to allow a pass to be used to authorise the entry of more than one person at each Event.

(iii) TOCA passes must not be removed from their official lanyards and must be worn around the neck of the person to whom it is issued so as to remain clearly visible at all times. It is forbidden to combine with or enclose a TOCA pass within a wallet or holder of any kind (unless supplied by TOCA or the Coordinator) or to attach additional items of any kind to it.

(iv) TOCA reserves the right to request further proof of identity in addition to a TOCA pass

2021 The Quaife MINI CHALLENGE Sporting & Technical Regulations

- (v) TOCA at all times reserves the right to refuse admission to the venue or access to a designated area to any person notwithstanding that such person may have been issued with an appropriate TOCA pass.
- 6.10.6 TOCA passes remain at all times the property of TOCA and may be issued altered or withdrawn at any time at the absolute discretion of the BTCC Coordinator in conjunction with the Championship Director and Coordinator. Passes that have been withdrawn will not unless under exceptional circumstances be returned to the person to whom they were originally issued.
- 6.10.7 TOCA in conjunction with the Championship Director and Coordinator reserves the right to remove immediately from the venue any person who is found to have violated the pass conditions contained in these Commercial Regulations and/or to withdraw permanently a TOCA pass issued to such person and/or to take or institute legal proceedings against that person.
- 6.10.8 All registered Entrants/Drivers are fully liable for any personnel and vehicle passes issued to them by TOCA and/or received on the Entrant's/Driver's behalf. The misuse of any passes allocated to an Entrant/Driver will result (without prejudice to any other action which may be taken by TOCA under the terms of these Commercial Regulations) in TOCA imposing a fine of £1000 for each act of misuse of the pass together with the confiscation of the pass concerned for such period of time as the Coordinator shall deem appropriate.
- 6.10.9 If a Championship Registration is withdrawn all passes issued in connection with that Registration must be returned to the Championship Coordinator. Any lost/mislaid passes will be subject to a penalty of £25.00 per pass multiplied by the number of remaining rounds.
- 6.10.10 TOCA passes will not be replaced if they are lost/mislaid unless they have been stolen and a copy of the police report relating to that offence is submitted to the BTCC Administration Office.
- 6.10.11 Each Entrant/Driver must also attend the MINI CHALLENGE Media Day (where applicable) with their intended Paddock vehicle for the Championship season and erect their awning (if applicable) for measurement by the BTCC Paddock Team. Passes will not be issued until the plot size has been measured and agreed by TOCA.

6.11 PADDOCK REGULATIONS

- 6.11.1 The amount of space requested will not necessarily be the space granted to an Entrant by BTCC who will assess individual requirements at the MINI CHALLENGE Media Day or their first event if the Entrant did not attend the Media Day
- 6.11.2 Each team will be permitted one transporter and awning to be parked in their designated Paddock area. Any Entrant requiring an additional awning must make a request in writing to the Championship Coordinator prior to the first Event. Only Entrants running more than four cars will be permitted an additional awning. Entrants running three or more cars may be permitted additional space for an additional Support Vehicle/flat patch. Awnings are not permitted on additional Support Vehicles.
- 6.11.3 Any amendment to the vehicle and/or awning size required must be notified to the BTCC Paddock Team for their approval prior to use.
- 6.11.4 The space allocated by BTCC is granted for the preparation of race cars and team catering. It is expressly forbidden to use this space as a hospitality area or trade site area.
- 6.11.5 No hospitality/entertaining will be allowed by Entrants/Drivers within the Paddock. Teams may use an area at the rear of their awning specifically for team catering only.

2021 The Quaife MINI CHALLENGE Sporting & Technical Regulations

- 6.11.6 Only small four-wheeled motorised Paddock vehicles which are authorised by TOCA may be used within the Paddock. These vehicles may only be used during authorised times and when driven by a current full road traffic licence holder for race team related business. Recreational use is strictly prohibited. For the avoidance of doubt all two-wheeled transport is banned from the Paddock. Please note that private cars and vans are not considered as Paddock vehicles. Motorised Paddock vehicles may only be used within the venue during the period from 2 (two) hours prior to the first scheduled track activity until 1 (one) hour after the last track activity on each day of the Event including the Paddock set-up day. There is a total ban on their use outside these times.
- 6.11.7 There is a speed limit of 10mph in the Paddock at each venue. The only movement of race cars permitted in the Paddock is on the way to the Assembly Area and on the way back from Parc Fermé with a current full road traffic licence holder seated in the Driver's position and in control of the car.
- 6.11.8 Tailgates on transporters must remain closed at all times except when loading and/or unloading your race cars.
- 6.11.9 Entrants/Drivers will be issued with a specific time to park up their race transporters in the Paddock at each Event. Access to the Paddock outside your parking-up time is forbidden unless the express written permission of your Championship Coordinator (after consultation with the BTCC Coordinator) has been obtained to park up at a different time. Verbal permission from circuit employees will not be accepted.
- 6.11.10 When a race transporter is parked in position in the Paddock at an Event it is expressly forbidden to remove it from its Paddock space until after the start of the third BTCC race of an Event unless the express permission of the BTCC Coordinator or his appointed representative has been obtained to remove it earlier. Awnings may not be dismantled until after the start of the second BTCC race of an Event.
- 6.11.11 Hard covers should protect any pipes wires or cables trailing from motorhomes transporters and/or generators where they will be crossed by pedestrians and/or vehicles.
- 6.11.12 All health and safety regulations as well as any such directives issued by the Championship and/or the venue must be met at all times.
- 6.11.13 It is an offence for any person to ride or drive any motor vehicle on the roads or other public areas under the control of the venue promoters unless they are covered by third party insurance. It is a condition of Registration that such insurance is in place. A copy of the policy must be lodged with the Championship Coordinator before the first Event of the season.
- 6.11.14 The Competitor's Entry Fee does not cover the provision of generator power to private motorhomes caravans or suchlike during an event. Generator power can be provided for such use via TOCA's Official Power Supplier - provided that sufficient Competitors book this at least 7 days in advance of each event to warrant a separate generator for such use being provided.
- 6.11.15 Any Competitor or any person or entity associated with a Competitor connecting to the TOCA Official Power Supplier's generators without pre-booking or paying upon demand will be immediately disconnected and fined a minimum of £100.
- 6.11.16 A fine of a minimum of £500 may be levied for any infringement of Paddock Regulations contained in these Commercial Regulations at the absolute discretion of the BTCC Coordinator or the Championship Coordinator. Each registered Entrant/Driver is responsible for the payment of fines incurred by all vehicles entering the Paddock/Pits on their behalf. The decision of the BTCC Coordinator or the Championship Coordinator in respect of this additional penalty shall be final with no appeal to the MSC National Court.

2021 The Quaife MINI CHALLENGE Sporting & Technical Regulations

- 6.11.17 All Paddock vehicles that require personnel to be on the roof (i.e. to affix awnings or flag poles/flags) must have the relevant safety equipment fitted. Any personnel on the roof must wear the relevant safety harnesses which must be affixed to the equipment on the roof
- 6.11.18 Easyup style awnings are not allowed to be used as race car awnings, they may only be used at the back of a main awning for use as a tyre area or similar.
- 6.11.19 Race car awnings must be fixed to a rigid lorry or articulated trailer and may not be free-standing.
- 6.11.20 Race car awnings must be fitted out with flooring tiles and garage boards.
- 6.11.21 The Championship Director or Coordinator shall have the discretion to require a Competitor or entrant to make improvements to the appearance of their paddock set up or refuse entry to the paddock.

6.12 TIMETABLE REGULATIONS

- 6.12.1 Should any Championship have less than 15 (fifteen) registered Drivers at an Event then BTCC reserves the right to re-schedule their race either first or last on the race day timetable at the next Event.
- 6.12.2 BTCC reserves the right to amend the race day timetable at its discretion.
- 6.12.3 Entrants/Drivers should listen carefully to the Paddock tannoy announcements and their Championship Coordinator regarding the time they are required in the Assembly Area. In ideal conditions the timetable may be brought forward and Entrants/Drivers may be called to the Assembly Area earlier than originally scheduled. Entrants/Drivers are warned that they will miss their qualifying session or race if they are not ready in the Assembly Area when the cars are released.

6.13 RADIOS

- 6.13.1 It is not permitted to use any form of pit to car communication systems during Qualifying and races at any event. Systems will be permitted during Friday free practice and MINI CHALLENGE test days but all equipment must be removed for Qualifying and races.
- 6.13.2 Radio frequencies used by an Entrant/Driver team member and/or any of their suppliers must be licensed for use in the UK by the appropriate regional office of the Radiocommunications Agency. The BTCC Coordinator must be notified prior to the start of the season of the Radio Frequency to be used by the Entrant/Driver team members and/or any of their suppliers. A copy of the Licence or Short Term Hire Agreement for the frequency must also be submitted. The BTCC Coordinator reserves the right to request production of the original Licence/Short Term Hire documentation to verify the use of any frequency by an Entrant/Driver team member and/or any of their suppliers at any time during the season.
- 6.13.3 The Entrant/Driver team member and/or any of their suppliers must at all times comply with the terms and conditions specified from time to time by the Radiocommunications Agency for the use of their radio frequency.
- 6.13.4 In the event that a frequency used by an Entrant/Driver team member and/or any of their suppliers interferes with a frequency used by a local emergency service or other third party the Entrant/Driver team member and/or supplier shall forthwith change its radio frequency to a non-conflicting frequency to the satisfaction of the BTCC Coordinator and in accordance with the requirements and prior approval of the Radiocommunications

2021 The Quaife MINI CHALLENGE Sporting & Technical Regulations

Agency. The Entrant/Driver team member and/or any of their suppliers will be suspended from qualifying and racing until a change of frequency has been effected and a copy of the approval of the Radiocommunication Agency submitted to the BTCC Coordinator.

- 6.13.5 If an Entrant/Driver team member and/or any of their suppliers wish to change their frequency they must first obtain approval from the Radiocommunications Agency and submit a copy of such approval to the BTCC Coordinator.
- 6.13.6 It is not permitted to scramble radio speech transmissions or encode them in any way.

6.14 MISCELLANEOUS

- 6.14.1 Competitors, entrants and teams and officials may not either individually or with any such participants or through any representative or agent procure solicit or arrange for any supplies gratuities products merchandise equipment or any other thing of value to be provided from any source whatsoever bearing or depicting any Championship logo and/or any trademark and/or any copyright and/or any image used or associated with the Championship without the prior written permission of the Coordinator to do so.
- 6.14.2 All images photographs recordings or representations of the participation in the Championship or association with the Championship of Competitors entrants and teams may only be used for commercial purposes with the prior written consent of the Coordinator. No consent is required for normal media reporting of the Championship.
- 6.14.3 All the broadcast recording cable satellite digital video internet and interactive rights and other rights in all media to the Championship and other related events are the sole property of TOCA. Any recording or broadcast of the Championship and other related events or rebroadcast or reproduction of material without express written permission of the Coordinator is strictly prohibited. Competitors entrants and teams currently registered in the Championship may subject to the prior written permission of the Coordinator and subject to any conditions that he may impose at his/her absolute discretion be granted rights to use broadcast material for their own specific promotional use within the UK without fee or charge. Rights requested for any other commercial use must be made in writing to the Coordinator and if granted will be subject to Licence which may include a fee or charge.

6.15 CHAMPIONSHIP LIVERY

- 6.15.1 Approved MINI CHALLENGE Championship stickers must be fixed to each competing car. Please see 5.19 for further details.
- 6.15.2 All surfaces which have not been claimed for stickers by MINI CHALLENGE it's sponsor companies or used for the application of starting numbers are free for use. Conflicting sponsor's stickers must be approved by the Championship Director in advance and the position and size and colours (if approved) will be at the discretion of the Championship Director.
- 6.15.3 The Championship organisers reserve the right to remove any badges or branding which is deemed to be unsuitable or conflicts with other Championship / MINI CHALLENGE sponsors.

6.16 TEAM FILMING / FOOTAGE

2021 The Quaife MINI CHALLENGE Sporting & Technical Regulations

- 6.16.1 Teams may only undertake their own 'behind the scenes' filming providing written permission - clarifying what content you wish to film & where you intend to use it (i.e. team website etc.) – is first be obtained from;
- Antony Williams MINI CHALLENGE CHAMPIONSHIP DIRECTOR
Alan Gow BTCC SERIES DIRECTOR
David Francis ITV SPORT BTCC DIRECTOR
- 6.16.2 Media Accreditation via the team must also be applied for from Dan Mayo (danjmayo@me.com) stating the intention of the person or crew to film video footage not stills photography.
- 6.16.3 If approved final accreditation for each event must be applied for by the filming team directly through each circuit. This includes the requirement to sign on with the circuit at each event.
- 6.16.4 They will issue you with a bib which **MUST BE WORN WHEN FILMING** or the camera operator will be ejected from the circuit.
- 6.16.5 **ABSOLUTELY NO FILMING IS ALLOWED IN THE PIT-LANE, THE GRID, PARC-FERME, ASSEMBLY AREA or TOCA TECHNICAL AREA. YOU ARE NOT PERMITTED TO FILM ANY PART OF THE RACES OR ANY MOVING RACE CARS - AT ANY TIME OR FROM ANY LOCATION.**
- 6.16.6 Teams will be permitted to film in and around the garages paddock areas spectator and trade areas transporters hospitality & motor homes. Garage filming must only be from within the garage not from the pit-lane looking in.
- 6.16.7 Film crews must remain cognisant of the ITV crew who have priority at all times.
- 6.16.8 Film crews may film the podium but only from behind the ITV crew and not obscure or hinder ITV's filming of the podium.
- 6.16.9 A positive image of the BTCC/MINI CHALLENGE and its Competitors sponsors and officials must be portrayed at all times. TOCA and ITV reserve the right to immediately withdraw any permission granted should they deem it preferable and/or necessary to do so.
- 6.16.10 Any filming or material obtained that goes outside these guidelines will result in the immediate withdrawal of any further permissions to the team for the rest of the season.

ON-BOARD FOOTAGE

- 6.16.11 Teams may use short clips of footage (up to 2 minutes in total) taken from the Judicial Cameras in Free Practice on the following terms;
- 6.16.12 A complete lap cannot be shown - it must be interspersed with other angles or footage. No more than 30 seconds of continuous footage at any one time can be used.
- 6.16.13 Any on-board footage containing vision or sound of anything out of the ordinary negative or untoward - particularly regarding another Competitor - cannot be used (e.g. another car spinning off or having an incident or mechanical failure etc).

ITV FOOTAGE REQUESTS

2021 The Quaife MINI CHALLENGE Sporting & Technical Regulations

6.16.14 Requests for internet/sponsor (non broadcast) use:

Written permission to obtain ITV footage needs to be sought from;

Antony Williams MINI CHALLENGE CHAMPIONSHIP DIRECTOR
Alan Gow BTCC SERIES DIRECTOR
David Francis ITV SPORT BTCC DIRECTOR

6.16.15 For ITV footage to be shown on a dedicated MINI CHALLENGE driver or teams official website or affiliated YouTube/media channel or to be shown at a team or sponsor function etc the following rules apply:

ITV has exclusive UK broadcast rights on all race footage for 7 days after each event. From the eighth day following each event (usually a Monday) drivers and teams are then allowed to use short (up to 5 minute) clips of ITV race footage on their sites free of any rights fee. However technical fees will apply as outlined in this document.

No MINI CHALLENGE/ITV footage can be broadcast on random 'YouTube' or suchlike Internet sites but can be broadcast on your individual dedicated team/driver/sponsor website or official YouTube site.

Footage supplied by ITV must have the ITV Sport graphic 'bug' applied on any use. The graphic bug will be supplied along with the footage and must be used top left or right as appropriate throughout the use of the ITV footage.

6.16.16 Requests for television broadcast use:

Written requests must be made to;

Antony Williams MINI CHALLENGE CHAMPIONSHIP DIRECTOR
Alan Gow BTCC SERIES DIRECTOR
David Francis ITV SPORT BTCC DIRECTOR

6.16.17 ITV has exclusive UK broadcast rights on all race footage in all media for 7 days after each event.

From the 8th day following the event (usually a Monday);

Footage to be broadcast on any UK & Eire television broadcast companies (i.e BBC SKY CHANNEL 5 etc) or any other medium must not be used without explicit agreement from Alan Gow and ITV. Rights clearance will need to be obtained from ITV (paul.Johnson2@ITV.com) and a rights-fee will also apply.

Footage to be broadcast on any medium outside of the UK & Eire must first obtain rights clearance from Alan Gow. However the actual footage must still be acquired from ITV.

6.16.18 HOW TO OBTAIN ITV MATERIAL & TRANSFER COSTS:

Written permission needs to be provided to David Francis at ITV and Steve Knee at Cloudbass.

You can then obtain MINI CHALLENGE footage from ITV Sport via Cloudbass (their media provider).

There is a charge of £200 per 'session' to cover their time and costs in accessing/transferring the archive and fielding requests. This 'session' reasonably covers the quantity of footage from two TOCA events – up to 1TB which is equivalent to 1000mins in some codec's. However requests made at the end of the season for footage from the entire season will be charged as ten separate sessions i.e. £2000 for a whole season's worth of footage.

2021 The Quaife MINI CHALLENGE Sporting & Technical Regulations

Cloudbass will need a 'drive' to put the footage on. They can supply a 1TB drive for £100 which you then keep. Alternatively you can either send them (at your cost) a blank drive of suitable size ready for use (minimum 1 TB and free of other material) or hand-over your drive in person to a member of Cloudbass at the TV compound on Friday or Saturday of a BTCC event only with prior warning. If you intend to hand-over a drive at an event you must let David Francis know - via email – by the close of business on the Thursday preceding an event.

Footage will be transferred in the days following a race weekend with the aim to send out drivers on the Wednesday. There is a charge of £10 p&p to post out your drive from Cloudbass or you can arrange to collect from Steve Knee at Cloudbass (address as below) from Wednesday afternoon onwards. All costs are plus VAT.

Footage will only be released once ITV have written permission from Alan Gow.

Along with the footage on the drive will be an ITV Sport graphic 'bug' - this must be used top left or right as appropriate over the images & throughout the use of the ITV footage.

Steve Knee MD Cloudbass. (sk@cloudbass.com)
Cloudbass Unit 1 Bradley Park High Holborn Road Ripley. DE5 3NW
T: +44 (0) 1773 744485

The use of any ITV Sport footage is always subject to the following:

1. Written permissions (by email) as detailed above.
2. Footage must be acquired directly from ITV and not filmed or downloaded from a TV screen or illegal feed of the ITV or any other programme.

ITV Sport on-screen logo and all graphics must always remain.

No digital alterations or enhancements of ITV footage is permitted; for example to mask or pixilate signage or graphics etc.

6.17. PRESS RELEASES

All driver and team press releases quoting 'MINI CHALLENGE' must be submitted to the MINI CHALLENGE for approval prior to release.

6.18 AVAILABILITY OF CARS

- 6.18.2 Specially built JCW race cars are available from Total Track Ltd or their nominated agents. These race cars are based on F56 2014-2021 road car models. All cars must be approved by the Organisers to be accepted to race in the MINI CHALLENGE.

7 CHAMPIONSHIP OFFICIALS

2021 The Quaife MINI CHALLENGE Sporting & Technical Regulations

Championship Director

Antony Williams

Unit 1
Roy Humphrey Estate
A140 Norwich Ipswich Road
Brome
Eye
Suffolk
IP23 8AW

Office Tel: 01379 870099
Mobile: 07852 337537
Email: antony@minichallenge.co.uk
Website: www.minichallenge.co.uk

Championship Coordinator

Rhea Beauchamp

Unit 1
Roy Humphrey Estate
A140 Norwich Ipswich Road
Brome
Eye
Suffolk
IP23 8AW

Office Tel: 01379 870099
Email: rhea@minichallenge.co.uk
Website: www.minichallenge.co.uk

Championship MOTORSPORT UK Eligibility Scrutineer

Steven Fitzgerald

Unit 1
Roy Humphrey Estate
A140 Norwich Ipswich Road
Brome
Eye
Suffolk
IP23 8AW

Office Tel: 01379 870099
Email: technical@minichallenge.co.uk
Website: www.minichallenge.co.uk

British Automobile Racing Club

2021 The Quaife MINI CHALLENGE Sporting & Technical Regulations**David Wheadon**

BARC
Thruxton Circuit
Andover
Hampshire
SP11 8PN

Tel: 01264 882207
Email: dwheadon@barc.net

Motorsport UK

Motorsport UK House
Riverside Park
Colnbrook
Slough
SL3 0HG
Tel: 01753 681 736
Website: www.motorsportuk.org

WEBSITES

Championship www.minichallenge.co.uk

BARC www.barc.net

2021 The Quaife MINI CHALLENGE Sporting & Technical Regulations



Technical Query Form

Any query regarding the regulations will only receive a response if the query is made using this form. This is to ensure that all questions are recorded correctly and the organiser can disseminate responses to all entrants where appropriate and entirely at the organisers discretion.

Car No:		Date:	
Chassis No:		Class:	
Driver/Entrant Name:		Signature:	
Request: (One request only per form)			
Championship/Scrutineer Reply:			
Date:		Position:	
Name:		Signature:	

2021 The Quaife MINI CHALLENGE Sporting & Technical Regulations

I, the undersigned entrant confirm that all non-championship parts are original BMW/MINI parts designed for a MINI F56 Cooper S 2014-2021 Build and that no Pattern parts are fitted other than where pattern parts are specifically allowed.

I, the undersigned entrant confirm that no parts have been modified other than where specifically allowed by these regulations or to repair the part as detailed in this log book.

I, the undersigned entrant confirm that this engine has been delivered to me by Damico Engines along with the Engine Build Certificate noted above and that no changes have been made to the engine since delivery, all seals remain intact and that all components fully comply with the Championship Regulations.

I, the undersigned entrant also confirm that the turbo detailed above has been delivered to me and that no changes have been made to the turbo since delivery, all seals remain intact and that all components fully comply with the Championship Regulations.

I, the undersigned entrant confirm that chassis is in accordance with the Championship Regulations, and that all components fitted fully comply with the Championship Regulations and that any repairs that required welding have been carried out by Total Track or its nominated agen as detailed above.

I, the undersigned entrant confirm that the dampers fitted are in accordance with the Championship Regulations and that any repairs and servicing have been carried out by Total Track or its nominated agent.

I, the undersigned entrant confirm that the gearbox and differential fitted are in accordance with the Championship Regulations and that any repairs and servicing has been carried out in line with these regulations and that no modifications have been made.

I, the undersigned entrant confirm that if any of the above components are changed/repaired/serviced that JCW Technical Log Book will need to be completed and submitted.

Signed:	
Name:	
Date:	

I, the Championship Eligibility scrutineer confirm receipt of this JCW Class Technical Log Book:

Signed:	
Name:	
Date:	

Appendix C: Total Track Ltd – JCW Power Test Authorisation



2021 The Quaife MINI CHALLENGE Sporting & Technical Regulations



JCW Power Test Authorisation

Whilst every care will be taken so as not to cause damage to a Competitor's car/engine Total Track Ltd cannot accept responsibility for damage resulting from participating in a Power Test.

Specifically, Total Track Ltd cannot accept responsibility for damage to engines due to heat soak.

In the event that Total Track's equipment or premises is damaged due to the failure of a components on a Competitor's car or engine, the cost of repairing Total Track's equipment will be borne by the Competitor.

The cost of cleaning fluid leaks will be borne by the Competitor.

The operation of Dyno equipment is dangerous and Total Track does not accept responsibility for injury or loss of life caused by its operation.

Competitors will be required to pay for the cost of testing immediately after the test run has completed. Only card payments will be accepted, no cheques or cash.

I the undersigned accept the above terms.

Name:

Signature:

Date:

Email Address: